

Product datasheet for PH304998

LYPLAL1 (NM_138794) Human Mass Spec Standard

Product data:

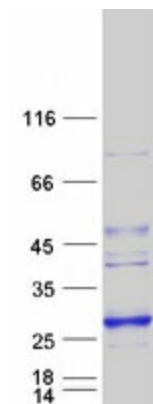
Product Type:	Mass Spec Standards
Description:	LYPLAL1 MS Standard C13 and N15-labeled recombinant protein (NP_620149)
Species:	Human
Expression Host:	HEK293
Expression cDNA Clone or AA Sequence:	RC204998
Predicted MW:	26.3 kDa
Protein Sequence:	<p>>RC204998 protein sequence</p> <p>Red=Cloning site Green=Tags(s)</p> <p>MAAASGSVLQRCIVSPAGRHSASLIFLHGSGDSGQGLRMWIKQVLNQDLTFQHIKIIYPTAPPRSYPMPK GGISNVWFDRFKITNDCEHLESIDVMCQVLTDLIDEEVKSGIKKNRILIGGFSMGGCMAMHLAYRNHQD VAGVFALSSFLNKASAVYQALQKSNGVLPFLFQCHGTADLVLHSAEETNSMLKSLGVTTKFHSFPNVY HELSKTELDILKLWILTKLPGE MEKQK</p> <p>TRTRPLEQKLISEEDLAANDILDYKDDDDKV</p>
Tag:	C-Myc/DDK
Purity:	> 80% as determined by SDS-PAGE and Coomassie blue staining
Concentration:	>0.05 µg/µL as determined by microplate BCA method
Labeling Method:	Labeled with [U- 13C6, 15N4]-L-Arginine and [U- 13C6, 15N2]-L-Lysine
Buffer:	25 mM Tris-HCl, 100 mM glycine, pH 7.3
Storage:	Store at -80°C. Avoid repeated freeze-thaw cycles.
Stability:	Stable for 3 months from receipt of products under proper storage and handling conditions.
RefSeq:	NP_620149
RefSeq Size:	1922
RefSeq ORF:	711
Synonyms:	Q96AV0
Locus ID:	127018
UniProt ID:	Q5VWZ2


[View online »](#)

Cytogenetics: 1q41

Summary: Has depalmitoylating activity toward KCNMA1. Does not exhibit phospholipase nor triacylglycerol lipase activity, able to hydrolyze only short chain substrates due to its shallow active site.[UniProtKB/Swiss-Prot Function]

Product images:



Coomassie blue staining of purified LYPLAL1 protein (Cat# [TP304998]). The protein was produced from HEK293T cells transfected with LYPLAL1 cDNA clone (Cat# [RC204998]) using MegaTran 2.0 (Cat# [TT210002]).