

## Product datasheet for PH304978

### Pregnancy Specific Glycoprotein 1 (PSG1) (NM\_006905) Human Mass Spec Standard

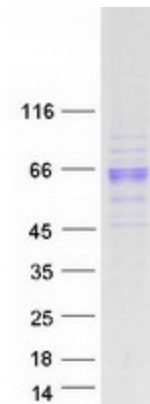
#### Product data:

|                                       |  |
|---------------------------------------|--|
| Product Type:                         | Mass Spec Standards  |
| Description:                          | PSG1 MS Standard C13 and N15-labeled recombinant protein (NP_008836)   |
| Species:                              | Human  |
| Expression Host:                      | HEK293   |
| Expression cDNA Clone or AA Sequence: | RC204978   |
| Predicted MW:                         | 47.9 kDa   |
| Protein Sequence:                     | >RC204978 protein sequence<br>Red=Cloning site Green=Tags(s)   |
|                                       | <p>MGTL SAPPCTQRIKWKGLLLTASLLNFWNLPTTAQVTIEAEP TKVSEGKDVLLL VHNLPQNL TG IYWKG<br/>QMRDLYHYITSYVVDGEIIIYGPAYSGRETAYSNASLLIQNVTREDAGSYTLHIKGGDGTGRVTRFTF<br/>TLHLETPKPSISSNLPRETMEAVSLTCDPETPDASYLWWMNGQSLPMTSLKLSLSETRTLFLLGVTKY<br/>TAGPYECEIRNPVSASRSDPVTLNLLPKLPKPYITINNLNPRENKDVLNFTCEPKSENYTYIWWLNGQSL<br/>PVSPRVKRP IENRILILPSVTRNETGPYQCEIRDYGGIRSDPVTLNVL YGPDLPRIYPSFTYYRSGEVL<br/>YLSCSADSNPQAQYSWTINEKFQLPGQKLFIRHITTKHSGLYVCSVRNSATGKESKSM TVEVSGKWIPA<br/>SLAIGF</p> <p>TRTRPLEQKLI SEEDLAANDILDYKDDDDKV</p> |
| Tag:                                  | C-Myc/DDK  |
| Purity:                               | > 80% as determined by SDS-PAGE and Coomassie blue staining  |
| Concentration:                        | >0.05 µg/µL as determined by microplate BCA method   |
| Labeling Method:                      | Labeled with [U- <sup>13</sup> C <sub>6</sub> , <sup>15</sup> N <sub>4</sub> ]-L-Arginine and [U- <sup>13</sup> C <sub>6</sub> , <sup>15</sup> N <sub>2</sub> ]-L-Lysine   |
| Buffer:                               | 25 mM Tris-HCl, 100 mM glycine, pH 7.3   |
| Storage:                              | Store at -80°C. Avoid repeated freeze-thaw cycles.   |
| Stability:                            | Stable for 3 months from receipt of products under proper storage and handling conditions.   |
| RefSeq:                               | <u>NP_008836</u>   |
| RefSeq Size:                          | 2306   |
| RefSeq ORF:                           | 1278   |



[View online »](#)

|                          |  |
|--------------------------|--|
| <b>Synonyms:</b>         | B1G1; CD66f; DHFRP2; FL-NCA-1/2; PBG1; PS-beta-C/D; PS-beta-G-1; PSBG-1; PSBG1; PSG95; PSGGA; PSGIIA; SP1  |
| <b>Locus ID:</b>         | 5669   |
| <b>UniProt ID:</b>       | <a href="#">P11464</a>   |
| <b>Cytogenetics:</b>     | 19q13.2  |
| <b>Summary:</b>          | The human placenta is a multihormonal endocrine organ that produces hormones, enzymes, and other molecules that support fetal survival and development. Pregnancy-specific beta-1-glycoprotein (PSBG, PSG) is a major product of the syncytiotrophoblast, reaching concentrations of 100 to 290 mg/l at term in the serum of pregnant women (Horne et al., 1976 [PubMed 971765]). PSG is a member of the immunoglobulin (Ig) superfamily (Watanabe and Chou, 1988 [PubMed 3257488]; Streydio et al., 1988 [PubMed 3260773]).[supplied by OMIM, Oct 2009] |
| <b>Protein Families:</b> | Secreted Protein   |

**Product images:**

Coomassie blue staining of purified PSG1 protein (Cat# [TP304978]). The protein was produced from HEK293T cells transfected with PSG1 cDNA clone (Cat# [RC204978]) using MegaTran 2.0 (Cat# [TT210002]).