

## Product datasheet for PH304977

### serum amyloid A2 (SAA2) (NM\_030754) Human Mass Spec Standard

#### Product data:

Product Type:	Mass Spec Standards
Description:	SAA2 MS Standard C13 and N15-labeled recombinant protein (NP_110381)
Species:	Human
Expression Host:	HEK293
Expression cDNA Clone or AA Sequence:	RC204977
Predicted MW:	13.5 kDa
Protein Sequence:	>RC204977 protein sequence Red=Cloning site Green=Tags(s)  MKLLTGLVFCSLVLSVSSRSFFSFLGEAFDGMWRAYSMDREANYIGSDKYFHARGNYDAAKRGPGGA WAAEVISNARENIQRLTGHGAEDSLADQAANKWGRSGRDPNHFRPAGLPEKY  TRTRPLEQKLISEEDLAANDILDYKDDDDKV
Tag:	C-Myc/DDK
Purity:	> 80% as determined by SDS-PAGE and Coomassie blue staining
Concentration:	>0.05 µg/µL as determined by microplate BCA method
Labeling Method:	Labeled with [U- 13C6, 15N4]-L-Arginine and [U- 13C6, 15N2]-L-Lysine
Buffer:	25 mM Tris-HCl, 100 mM glycine, pH 7.3
Storage:	Store at -80°C. Avoid repeated freeze-thaw cycles.
Stability:	Stable for 3 months from receipt of products under proper storage and handling conditions.
RefSeq:	<a href="#">NP_110381</a>
RefSeq Size:	594
RefSeq ORF:	366
Synonyms:	SAA; SAA1
Locus ID:	6289
UniProt ID:	<a href="#">P02735</a> , <a href="#">P0DJ19</a>
Cytogenetics:	11p15.1



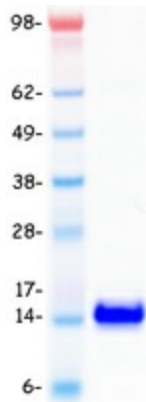
[View online »](#)

**Summary:**

This gene encodes a member of the serum amyloid A family of apolipoproteins. The encoded preproprotein is proteolytically processed to generate the mature protein. This protein is a major acute phase protein that is highly expressed in response to inflammation and tissue injury. This protein also plays an important role in HDL metabolism and cholesterol homeostasis. High levels of this protein are associated with chronic inflammatory diseases including atherosclerosis, rheumatoid arthritis, Alzheimer's disease and Crohn's disease. This protein may also be a potential biomarker for certain tumors. Finally, antimicrobial activity against *S. aureus* and *E. coli* resides in the N-terminal portion of the mature protein. [provided by RefSeq, Jul 2020]

**Protein Families:**

Druggable Genome

**Product images:**

Coomassie blue staining of purified SAA2 protein (Cat# [TP304977]). The protein was produced from HEK293T cells transfected with SAA2 cDNA clone (Cat# [RC204977]) using MegaTran 2.0 (Cat# [TT210002]).