

## Product datasheet for PH304974

### CDC42EP2 (NM\_006779) Human Mass Spec Standard

#### Product data:

|                                       |   |
|---------------------------------------|---|
| Product Type:                         | Mass Spec Standards   |
| Description:                          | CDC42EP2 MS Standard C13 and N15-labeled recombinant protein (NP_006770)  |
| Species:                              | Human   |
| Expression Host:                      | HEK293  |
| Expression cDNA Clone or AA Sequence: | RC204974  |
| Predicted MW:                         | 22.5 kDa  |
| Protein Sequence:                     | >RC204974 protein sequence<br><b>Red</b> =Cloning site <b>Green</b> =Tags(s)<br><br>MSTKVPVIYLKRGSRKGGKKEKLRDLLSSDMISPLGDFRHTIHIGSGGGSDMFGDISFLQGKFHLLPGTMV<br>EGPEEDGTFDLPFQFTRTATVCGRELPDGPSPLLNKNAISLPVIGGPQALTLPTAQAPPKPPRLHLETPQP<br>SPQEGGSDIWRIPETGSPNSGLTPESGAEFPFLSNASSLLSLHVDLGPSILDDVLQIMDQDLDSMQIPT<br><br><b>TR</b> TRPLEQK <b>L</b> ISEED <b>L</b> AAND <b>I</b> L <b>D</b> YK <b>D</b> DD <b>K</b> V |
| Tag:                                  | C-Myc/DDK   |
| Purity:                               | > 80% as determined by SDS-PAGE and Coomassie blue staining   |
| Concentration:                        | >0.05 µg/µL as determined by microplate BCA method  |
| Labeling Method:                      | Labeled with [U- <sup>13</sup> C <sub>6</sub> , <sup>15</sup> N <sub>4</sub> ]-L-Arginine and [U- <sup>13</sup> C <sub>6</sub> , <sup>15</sup> N <sub>2</sub> ]-L-Lysine  |
| Buffer:                               | 25 mM Tris-HCl, 100 mM glycine, pH 7.3  |
| Storage:                              | Store at -80°C. Avoid repeated freeze-thaw cycles.  |
| Stability:                            | Stable for 3 months from receipt of products under proper storage and handling conditions.  |
| RefSeq:                               | <a href="#">NP_006770</a>   |
| RefSeq Size:                          | 2043  |
| RefSeq ORF:                           | 630   |
| Synonyms:                             | BORG1; CEP2   |
| Locus ID:                             | 10435   |
| UniProt ID:                           | <a href="#">O14613</a>  |

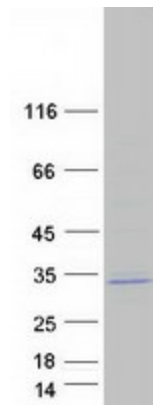


[View online »](#)

**Cytogenetics:** 11q13.1

**Summary:** CDC42, a small Rho GTPase, regulates the formation of F-actin-containing structures through its interaction with the downstream effector proteins. The protein encoded by this gene is a member of the Borg family of CDC42 effector proteins. Borg family proteins contain a CRIB (Cdc42/Rac interactive-binding) domain. They bind to, and negatively regulate the function of CDC42. Coexpression of this protein with CDC42 suggested a role of this protein in actin filament assembly and cell shape control. [provided by RefSeq, Aug 2011]

**Product images:**



Coomassie blue staining of purified CDC42EP2 protein (Cat# [TP304974]). The protein was produced from HEK293T cells transfected with CDC42EP2 cDNA clone (Cat# [RC204974]) using MegaTran 2.0 (Cat# [TT210002]).