

Product datasheet for PH304937

Torsin B (TOR1B) (NM_014506) Human Mass Spec Standard

Product data:

Product Type:	Mass Spec Standards
Description:	TOR1B MS Standard C13 and N15-labeled recombinant protein (NP_055321)
Species:	Human
Expression Host:	HEK293
Expression cDNA Clone or AA Sequence:	RC204937
Predicted MW:	38 kDa
Protein Sequence:	>RC204937 protein sequence Red =Cloning site Green =Tags(s)

MLRAGWLRGAAALALLAARVVAEFEPITVGLAIGAASAITGYLSYNDIYCRFAECCREERPLNASALKL
 DLEEKLFQHLATEVIFKALTGFRNNKNPKPLTSLHGWAGTGKNFVSQIVAENLHPKGLKSNFVHLFV
 STLHFPHEQKIKLYQDQLQKWIRGNVSACANSVFI FDEM DKLHPGIIDAIKPF LDY YEQVDGVS YRKAIF
 IFLSNAGGDLITKTALDFWRAGRKREDIQLKDLEPVL SVGVFN NKH SGLWHSGLIDKNLIDYFIPFLPLE
 YRHVKMCVRAEMRARGSAIDEDIVTRVAEEMTFPRDEKIYSDKGCKTVQSRLDFH

TRTRPLEQKLISEEDLANDILDYKDDDDKV

Tag:	C-Myc/DDK
Purity:	> 80% as determined by SDS-PAGE and Coomassie blue staining
Concentration:	>0.05 µg/µL as determined by microplate BCA method
Labeling Method:	Labeled with [U- ¹³ C ₆ , ¹⁵ N ₄]-L-Arginine and [U- ¹³ C ₆ , ¹⁵ N ₂]-L-Lysine
Buffer:	25 mM Tris-HCl, 100 mM glycine, pH 7.3
Storage:	Store at -80°C. Avoid repeated freeze-thaw cycles.
Stability:	Stable for 3 months from receipt of products under proper storage and handling conditions.
RefSeq:	<u>NP_055321</u>
RefSeq Size:	2774
RefSeq ORF:	1008
Synonyms:	DQ1
Locus ID:	27348


[View online »](#)

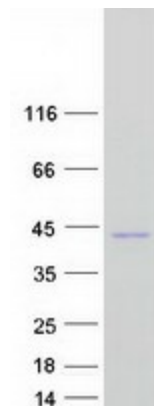
UniProt ID: O14657

Cytogenetics: 9q34.11

Summary: The protein encoded by this gene is an ATPase found primarily in the endoplasmic reticulum and nuclear envelope. This gene has a highly-similar neighboring gene, TOR1A, that encodes a protein that is likely to interact in a complex with this protein. Finally, this protein may act as a chaperone and play a role in maintaining the integrity of the nuclear envelope and endoplasmic reticulum. Several transcript variants, some protein-coding and others non-protein coding, have been found for this gene. [provided by RefSeq, Dec 2015]

Protein Families: Transmembrane

Product images:



Coomassie blue staining of purified TOR1B protein (Cat# [TP304937]). The protein was produced from HEK293T cells transfected with TOR1B cDNA clone (Cat# [RC204937]) using MegaTran 2.0 (Cat# [TT210002]).