

Product datasheet for PH304932

Tbp7 (PSMC4) (NM_006503) Human Mass Spec Standard

Product data:

Product Type:	Mass Spec Standards
Description:	PSMC4 MS Standard C13 and N15-labeled recombinant protein (NP_006494)
Species:	Human
Expression Host:	HEK293
Expression cDNA Clone or AA Sequence:	RC204932
Predicted MW:	47.4 kDa
Protein Sequence:	>RC204932 protein sequence Red=Cloning site Green=Tags(s)

MEEIGILVEKAQDEIPALSVSRPQTGLSFLGPEPEDLEDLYSRYKKLQQELEFLEVQEEYIKDEQKNLKK
EFLHAQEEVKRIQSIPLVIGQFLEAVDQNTAIVGSTTGSNYYVRILSTIDRELLKPNASVALHKHSNALV
DVLPEADSSIMMLTSDQKPDVMYADIGGMDIQKQEVREAVELPLTHFELYKQIGIDPPRGVLMYGPFGC
GKTM LAKAVAHHTTAAFIRVVGSEFVQKYL GEGPRMVRDVFRLAKENAPAIIFIDEIDAIATKRFDAQTG
ADREVQRILLELLNQMDGFDQNVNVKVMATNRADTLDPALLRPGRLDRKIEFPLPDRRQKRLIFSTITS
KMNLSEEVDLEDYVARPDKISGADINSICQESGMLAVRENRYIVLAKDFEKAYKTVIKKDEQEHEFYK

TRTRPLEQKLI SEEDLAANDILDYKDDDDKV

Tag:	C-Myc/DDK
Purity:	> 80% as determined by SDS-PAGE and Coomassie blue staining
Concentration:	>0.05 µg/µL as determined by microplate BCA method
Labeling Method:	Labeled with [U- ¹³ C ₆ , ¹⁵ N ₄]-L-Arginine and [U- ¹³ C ₆ , ¹⁵ N ₂]-L-Lysine
Buffer:	25 mM Tris-HCl, 100 mM glycine, pH 7.3
Storage:	Store at -80°C. Avoid repeated freeze-thaw cycles.
Stability:	Stable for 3 months from receipt of products under proper storage and handling conditions.
RefSeq:	NP_006494
RefSeq Size:	1914
RefSeq ORF:	1254
Synonyms:	MIP224; RPT3; S6; TBP-7; TBP7
Locus ID:	5704



[View online »](#)

UniProt ID: [P43686](#), [A8K2M0](#)

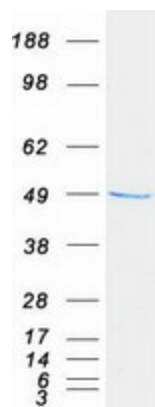
Cytogenetics: 19q13.2

Summary: The 26S proteasome is a multicatalytic proteinase complex with a highly ordered structure composed of 2 complexes, a 20S core and a 19S regulator. The 20S core is composed of 4 rings of 28 non-identical subunits; 2 rings are composed of 7 alpha subunits and 2 rings are composed of 7 beta subunits. The 19S regulator is composed of a base, which contains 6 ATPase subunits and 2 non-ATPase subunits, and a lid, which contains up to 10 non-ATPase subunits. Proteasomes are distributed throughout eukaryotic cells at a high concentration and cleave peptides in an ATP/ubiquitin-dependent process in a non-lysosomal pathway. This gene encodes a member of the triple-A family of ATPases that is a component of the 19S regulatory subunit and plays a role in 26S proteasome assembly. The encoded protein interacts with gankyrin, a liver oncoprotein, and may also play a role in Parkinson's disease through interactions with synphilin-1. Alternatively spliced transcript variants encoding multiple isoforms have been observed for this gene. [provided by RefSeq, Jul 2012]

Protein Families: Druggable Genome

Protein Pathways: Proteasome

Product images:



Coomassie blue staining of purified PSMC4 protein (Cat# [TP304932]). The protein was produced from HEK293T cells transfected with PSMC4 cDNA clone (Cat# [RC204932]) using MegaTran 2.0 (Cat# [TT210002]).