

Product datasheet for PH304919

EPS8L1 (NM_017729) Human Mass Spec Standard

Product data:

Product Type:	Mass Spec Standards
Description:	EPS8L1 MS Standard C13 and N15-labeled recombinant protein (NP_060199)
Species:	Human
Expression Host:	HEK293
Expression cDNA Clone or AA Sequence:	RC204919
Predicted MW:	66.5 kDa
Protein Sequence:	>RC204919 protein sequence Red=Cloning site Green=Tags(s)

MNRTWPRRIWGSSQDEAELIREDIQGALHNYRSGRGERRAAALRATQEELQRDRSPAETPPLQRRPSVR
AVISTVERGAGRGRPQAKPIPEAEEAQRPEPVGTSSNADSASPDLGPRGPD LAVLQAEREVDILNHVFDD
VESFVSRLQKSAEAARVLEHRERGRSRRAAGEGLLTLRAKPPSEAEYTDVLQKIKYAFSLLARLRGNI
ADPSSPELLHFLFGPLQMI VNTSGGPEF ASSVRRPHL TSDAVALLRDNVTPRENELWTSLGDSWTRPGLE
LSPEEGPPYRPEFFSGWEPPVTD PQSRAWEDPVEKQLQHERRRRQQSAPQVAVNGHRDLEPESEPLESE
TAGKWVLCNYDFQARNSEL SVKQRDVLEVLDDSRKWWKVRDPAGQEGYVPYNYL TPYPGPRLHHSQSPA
RSLNSTPPPPAPAPAPPALARPRWDRPRWDCDSLNGLDPSEKEKFSQMLIVNEELQARLAQGRSGPS
RAVPGPRAPEPQLSPGSDASEVRAWLQAKGFSSTVDALGVL TGAQLFSLQKEELRAVSP EEGARVYSQV
TVQRSLLEDKEKVSELEAVMEKQKKKVEGEVEMEVI

TRTRPLEQKLISEEDLAANDILDYKDDDDKV

Tag:	C-Myc/DDK
Purity:	> 80% as determined by SDS-PAGE and Coomassie blue staining
Concentration:	>0.05 µg/µL as determined by microplate BCA method
Labeling Method:	Labeled with [U- ¹³ C ₆ , ¹⁵ N ₄]-L-Arginine and [U- ¹³ C ₆ , ¹⁵ N ₂]-L-Lysine
Buffer:	25 mM Tris-HCl, 100 mM glycine, pH 7.3
Storage:	Store at -80°C. Avoid repeated freeze-thaw cycles.
Stability:	Stable for 3 months from receipt of products under proper storage and handling conditions.
RefSeq:	NP_060199
RefSeq Size:	2224
RefSeq ORF:	1788



[View online »](#)

Synonyms: DRC3; EPS8R1; PP10566

Locus ID: 54869

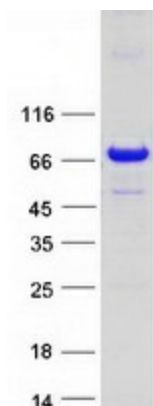
UniProt ID: [Q8TE68](#)

Cytogenetics: 19q13.42

Summary: This gene encodes a protein that is related to epidermal growth factor receptor pathway substrate 8 (EPS8), a substrate for the epidermal growth factor receptor. The function of this protein is unknown. At least two alternatively spliced transcript variants encoding different isoforms have been found for this gene. [provided by RefSeq, Jul 2008]

Protein Families: Druggable Genome

Product images:



Coomassie blue staining of purified EPS8L1 protein (Cat# [TP304919]). The protein was produced from HEK293T cells transfected with EPS8L1 cDNA clone (Cat# [RC204919]) using MegaTran 2.0 (Cat# [TT210002]).