

Product datasheet for PH304916

ESRP2 (NM_024939) Human Mass Spec Standard

Product data:

Product Type:	Mass Spec Standards
Description:	ESRP2 MS Standard C13 and N15-labeled recombinant protein (NP_079215)
Species:	Human
Expression Host:	HEK293
Expression cDNA Clone or AA Sequence:	RC204916
Predicted MW:	77.4 kDa
Protein Sequence:	>RC204916 protein sequence Red=Cloning site Green=Tags(s)

MTPPPPPPPPGPDPAADPAADPCWPVGSLLVFLFGATAGALGRDLGSDETDLILLVWQVVEPRSRQVGTL
HKSLVRAEAAALSTQCREASGLSADSLARAELDKVLQQFSQLVNGDVALLGGPYMLCTDGQQLLRQVL
HPEASRKNLVLPMFFSFYDLRREFHMQHPSTCPARDLTVATMAQGLGLETATEDDFGVWEKTMVAVI
LHLLKEPSSQLFSKPEVIKQKYETGPCSKADVVDSETVVRARGLPWQSSDQDVARFFKGLNVARGGVALC
LNAQGRNGEALIRFVDSEQRDLALQRHKHMGVRYIEVYKATGEEFVKIAGGTSLEVARFLSREDQVIL
RLRGLPFSAGPTDVLGFLGPECPVTGGTEGLLFVRHPDGRPTGDAFALFACELAQAALRRHKGMLGKRY
IELFRSTAAEVQVQLNRYASGPLLPTLTAPLLPIPFPLAPGTGRDCVRLRGLPYTATIEDILSFLGAAA
DIRPHGVHMLNQQGRPSGDAFIQMTSAERALAAQRCHKVKMKERYVEVPCSTEEMSRVLMGGTLGRS
GMSPPCKLPCLSPPTYTTFQATPTLIPTETAALYPSSALLPAARVPAAPTPVAYYPGPATQLYLNAY
YSPSPVSPPTVGYLTPTAALASAPTSVLSQSGALVRMQVVPYTAGMKDLLSVFQAYQLPADDYTSMPV
GDPPRTVLQAPKEWVCL

TRTRPLEQKLISEEDLAANDILDYKDDDDKV

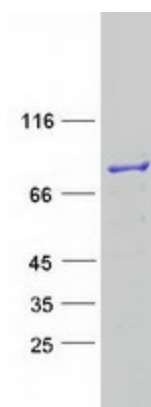
Tag:	C-Myc/DDK
Purity:	> 80% as determined by SDS-PAGE and Coomassie blue staining
Concentration:	>0.05 µg/µL as determined by microplate BCA method
Labeling Method:	Labeled with [U- 13C6, 15N4]-L-Arginine and [U- 13C6, 15N2]-L-Lysine
Buffer:	25 mM Tris-HCl, 100 mM glycine, pH 7.3
Storage:	Store at -80°C. Avoid repeated freeze-thaw cycles.
Stability:	Stable for 3 months from receipt of products under proper storage and handling conditions.
RefSeq:	<u>NP_079215</u>



[View online »](#)

RefSeq Size:	4021
RefSeq ORF:	2151
Synonyms:	RBM35B
Locus ID:	80004
UniProt ID:	Q9H6T0
Cytogenetics:	16q22.1
Summary:	ESRP2 is an epithelial cell-type-specific splicing regulator (Warzecha et al., 2009 [PubMed 19285943]).[supplied by OMIM, Aug 2009]

Product images:



Coomassie blue staining of purified ESRP2 protein (Cat# [TP304916]). The protein was produced from HEK293T cells transfected with ESRP2 cDNA clone (Cat# [RC204916]) using MegaTran 2.0 (Cat# [TT210002]).