

Product datasheet for PH304904

SERPINE2 (NM_006216) Human Mass Spec Standard

Product data:

Product Type:	Mass Spec Standards
Description:	SERPINE2 MS Standard C13 and N15-labeled recombinant protein (NP_006207)
Species:	Human
Expression Host:	HEK293
Expression cDNA Clone or AA Sequence:	RC204904
Predicted MW:	44 kDa
Protein Sequence:	>RC204904 protein sequence Red=Cloning site Green=Tags(s)
	MNWHLPLFLLASVTLPSICSHFNPLSLEELGSNTGIQVFNQIVKSRPHDNIVISPHGIASVLGMLQLGAD GRTKKQLAMVMRYGVNGVGKILKKINKAIVSKKNKDIVTVANAVFVKNASEIEVPFVTRNKDVFQCEVRN VNFEDPASACDSINAWVKNETRDMIDNLLSPDLIDGVLTRLVNAVYFKGLWKSRLFQENTKKRTFVAA DGKSYQVPMALQLSVFRCGSTSAPNDLWYNFIELPYHGESISMLIALPTESSTPLSAIIPHISTKTIDSW MSIMVPKRQVILPKFTAQAQTLKEPLKVLGITDMFSSKANFAKITTGSENLHVSHILQKAKIEVSED GTKASAATTAILIARSSPPWFIVDRPFLFFIRHNPTGAVLFMGQINKP
	TRTRPLEQKLISEEDLAANDILDYKDDDDKV
Tag:	C-Myc/DDK
Purity:	> 80% as determined by SDS-PAGE and Coomassie blue staining
Concentration:	>0.05 µg/µL as determined by microplate BCA method
Labeling Method:	Labeled with [U- ¹³ C ₆ , ¹⁵ N ₄]-L-Arginine and [U- ¹³ C ₆ , ¹⁵ N ₂]-L-Lysine
Buffer:	25 mM Tris-HCl, 100 mM glycine, pH 7.3
Storage:	Store at -80°C. Avoid repeated freeze-thaw cycles.
Stability:	Stable for 3 months from receipt of products under proper storage and handling conditions.
RefSeq:	<u>NP_006207</u>
RefSeq Size:	2259
RefSeq ORF:	1194
Synonyms:	GDN; GDNPF; PI-7; PI7; PN-1; PN1; PNI
Locus ID:	5270



[View online »](#)

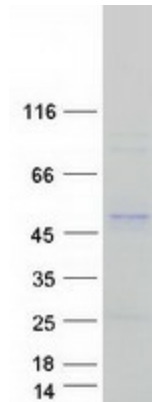
UniProt ID: [P07093](#), [A0A024R451](#)

Cytogenetics: 2q36.1

Summary: This gene encodes a member of the serpin family of proteins, a group of proteins that inhibit serine proteases. Thrombin, urokinase, plasmin and trypsin are among the proteases that this family member can inhibit. This gene is a susceptibility gene for chronic obstructive pulmonary disease and for emphysema. Alternative splicing results in multiple transcript variants. [provided by RefSeq, Aug 2012]

Protein Families: Druggable Genome, Secreted Protein

Product images:



Coomassie blue staining of purified SERPINE2 protein (Cat# [TP304904]). The protein was produced from HEK293T cells transfected with SERPINE2 cDNA clone (Cat# [RC204904]) using MegaTran 2.0 (Cat# [TT210002]).