

Product datasheet for PH304901

CEACAM1 (NM_001024912) Human Mass Spec Standard

Product data:

Product Type:	Mass Spec Standards
Description:	CEACAM1 MS Standard C13 and N15-labeled recombinant protein (NP_001020083)
Species:	Human
Expression Host:	HEK293
Expression cDNA Clone or AA Sequence:	RC204901
Predicted MW:	51.1 kDa
Protein Sequence:	>RC204901 protein sequence Red=Cloning site Green=Tags(s)

MGHLSAPLHRVRVPWQGLLLTASLLTFWNPPTTAQLTTESMPFNVAEGKEVLLL VHNLPQQLFGYSWYKG
ERVDGNRQIVGYAIGTQQATPGPANSGRETIYPNASLLIQNVTQNDTGFYTLQVIKSDLVNEEATGQFHV
YPELPKPSISSNNSNPVEDKDAVAFTCEPETQDTTYLWWINNQSLPVSRLQLSNGNRTL TLLSVTRNDT
GPYECEIQNPVSANRSDPVTNLVNTYGPDTPTISPSDYYRPGANLSLSCYAASNPPAQYSWLINGTFQQS
TQELFIPNITVNNSGSYTCHANNSVTGCNRTTVKTIIVTELSPVVAKPQIKASKTTVTGDKDSVNLTCST
NDTGISIRWFFKNQSLPSSERMKLSQGNTTLSINPVKREDAGTYWCEVFNPISKQSDPIMLVNPNALP
QENGLSPGAIAGIVIGVVALVALIAVALACFLHFGKTGRTPMTHLTR

TRTRPLEQKLI SEEDLAANDILDYKDDDDKV

Tag:	C-Myc/DDK
Purity:	> 80% as determined by SDS-PAGE and Coomassie blue staining
Concentration:	>0.05 µg/µL as determined by microplate BCA method
Labeling Method:	Labeled with [U- ¹³ C ₆ , ¹⁵ N ₄]-L-Arginine and [U- ¹³ C ₆ , ¹⁵ N ₂]-L-Lysine
Buffer:	25 mM Tris-HCl, 100 mM glycine, pH 7.3
Storage:	Store at -80°C. Avoid repeated freeze-thaw cycles.
Stability:	Stable for 3 months from receipt of products under proper storage and handling conditions.
RefSeq:	<u>NP_001020083</u>
RefSeq Size:	3475
RefSeq ORF:	1404
Synonyms:	BGP; BGP1; BGPI



[View online »](#)

Locus ID: 634

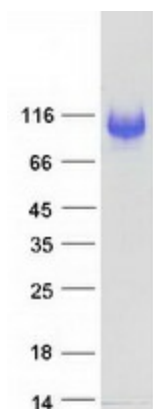
UniProt ID: [P13688](#), [Q3KRG8](#)

Cytogenetics: 19q13.2

Summary: This gene encodes a member of the carcinoembryonic antigen (CEA) gene family, which belongs to the immunoglobulin superfamily. Two subgroups of the CEA family, the CEA cell adhesion molecules and the pregnancy-specific glycoproteins, are located within a 1.2 Mb cluster on the long arm of chromosome 19. Eleven pseudogenes of the CEA cell adhesion molecule subgroup are also found in the cluster. The encoded protein was originally described in bile ducts of liver as biliary glycoprotein. Subsequently, it was found to be a cell-cell adhesion molecule detected on leukocytes, epithelia, and endothelia. The encoded protein mediates cell adhesion via homophilic as well as heterophilic binding to other proteins of the subgroup. Multiple cellular activities have been attributed to the encoded protein, including roles in the differentiation and arrangement of tissue three-dimensional structure, angiogenesis, apoptosis, tumor suppression, metastasis, and the modulation of innate and adaptive immune responses. Multiple transcript variants encoding different isoforms have been reported, but the full-length nature of all variants has not been defined. [provided by RefSeq, May 2010]

Protein Families: Druggable Genome, Transmembrane

Product images:



Coomassie blue staining of purified CEACAM1 protein (Cat# [TP304901]). The protein was produced from HEK293T cells transfected with CEACAM1 cDNA clone (Cat# [RC204901]) using MegaTran 2.0 (Cat# [TT210002]).