

## Product datasheet for PH304899

### Endothelin B Receptor (EDNRB) (NM\_000115) Human Mass Spec Standard

#### Product data:

Product Type:	Mass Spec Standards
Description:	EDNRB MS Standard C13 and N15-labeled recombinant protein (NP_000106)
Species:	Human
Expression Host:	HEK293
Expression cDNA Clone or AA Sequence:	RC204899
Predicted MW:	49.6 kDa
Protein Sequence:	>RC204899 protein sequence Red=Cloning site Green=Tags(s)

MQPPSLCGRALVALVLACGLSRIWGEERGFPDRATPLLQTAEIMTPPTKTLWPKGSNASLARSLAPAE  
VPKGDRTAGSPRTISPPPCQGPIEIKETFKYINTVVSCLVFLVGIIGNSTLLRIIYKNKCMRNGPNILI  
ASLALGDLHIVIDIPINVYKLLAEDWPFGAEMCKLVVPIQKASVGITVLSLICALSIDRYAVASWSRIK  
GIGVPKWTAVEIVLIWVVSVVLAVPEAIGFDIITMDYKGSYLRIKLLHPVQKTAQFMQFYKTAKDWWLFSF  
YFCLPLAITAFFYTLMTCEMLRKKSGMQIALNDHLKQRREVAKTVFCLVLFALCWLPLHLRILKLTLY  
NQNDPNRCELLSFLVLDYIGINMASLNSCINPIALYLVSKRFKNCFKSCLCCWCQSFEKQSLEEKQSC  
LKFKANDHGYDNFRSSNKYSSS

TRTRPLEQKLISEEDLAANDILDYKDDDDKV

Tag:	C-Myc/DDK
Purity:	> 80% as determined by SDS-PAGE and Coomassie blue staining
Concentration:	>0.05 µg/µL as determined by microplate BCA method
Labeling Method:	Labeled with [U- <sup>13</sup> C <sub>6</sub> , <sup>15</sup> N <sub>4</sub> ]-L-Arginine and [U- <sup>13</sup> C <sub>6</sub> , <sup>15</sup> N <sub>2</sub> ]-L-Lysine
Buffer:	25 mM Tris-HCl, 100 mM glycine, pH 7.3
Storage:	Store at -80°C. Avoid repeated freeze-thaw cycles.
Stability:	Stable for 3 months from receipt of products under proper storage and handling conditions.
RefSeq:	<u><a href="#">NP_000106</a></u>
RefSeq Size:	4296
RefSeq ORF:	1326
Synonyms:	ABCD5; ET-B; ET-BR; ETB; ETB1; ETBR; ETRB; HSCR; HSCR2; WS4A



[View online »](#)

Locus ID: 1910

UniProt ID: [P24530](#)

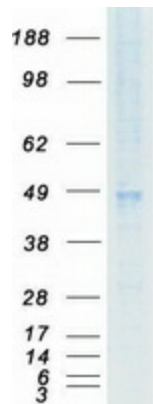
Cytogenetics: 13q22.3

**Summary:** The protein encoded by this gene is a G protein-coupled receptor which activates a phosphatidylinositol-calcium second messenger system. Its ligand, endothelin, consists of a family of three potent vasoactive peptides: ET1, ET2, and ET3. Studies suggest that the multigenic disorder, Hirschsprung disease type 2, is due to mutations in the endothelin receptor type B gene. Alternative splicing and the use of alternative promoters results in multiple transcript variants. [provided by RefSeq, Oct 2016]

**Protein Families:** Druggable Genome, GPCR, Transmembrane

**Protein Pathways:** Calcium signaling pathway, Melanogenesis, Neuroactive ligand-receptor interaction

### Product images:



Coomassie blue staining of purified EDNRB protein (Cat# [TP304899]). The protein was produced from HEK293T cells transfected with EDNRB cDNA clone (Cat# [RC204899]) using MegaTran 2.0 (Cat# [TT210002]).