

Product datasheet for PH304889

Solute carrier family 22 member 18 (SLC22A18) (NM_183233) Human Mass Spec Standard

Product data:

Product Type:	Mass Spec Standards
Description:	SLC22A18 MS Standard C13 and N15-labeled recombinant protein (NP_899056)
Species:	Human
Expression Host:	HEK293
Expression cDNA Clone or AA Sequence:	RC204889
Predicted MW:	44.8 kDa
Protein Sequence:	>RC204889 protein sequence Red=Cloning site Green=Tags(s)

MQGARAPRDQGSQSPGRMSALGRSSVILLTYVLAATELTCLFMQFSIVPYLSRKLGLDSIAFGYLQTTFGV
LQLLGGPVFGRFADQRGARAAL TLSFLAALALYLLAAAASSPALPGVYLLFASRLPGALMHTLPAAQMVI
TDL SAPEERPAALGRLGLCFGVGVILGSLGGLTLYSAYGIQCPAILAALATLLGAVLSFTCIPASTKGAK
TDAQAPLPGGPRASVFDLKAIASLLRPLDVPRIFLVKVASNCPTGLFMVMFSIISMDFFQLEAAQAGYLM
SFFGLLQMTQGLVIGQLSSHFSSEVLLRASLVFIVVGLAMAWMSSVFHFCLLVPGLVFSLCTLNVTD
SMLIKAVSTSDTGTMLGLCASVQPLLRTLGPVVGGLLYRSFGVPVFGHVQVAINTLVLLVLRKMPQRK
DKVR

TRTRPLEQKLI SEEDLAANDILDYKDDDDKV

Tag:	C-Myc/DDK
Purity:	> 80% as determined by SDS-PAGE and Coomassie blue staining
Concentration:	>0.05 µg/µL as determined by microplate BCA method
Labeling Method:	Labeled with [U- ¹³ C ₆ , ¹⁵ N ₄]-L-Arginine and [U- ¹³ C ₆ , ¹⁵ N ₂]-L-Lysine
Buffer:	25 mM Tris-HCl, 100 mM glycine, pH 7.3
Storage:	Store at -80°C. Avoid repeated freeze-thaw cycles.
Stability:	Stable for 3 months from receipt of products under proper storage and handling conditions.
RefSeq:	<u>NP_899056</u>
RefSeq Size:	1563
RefSeq ORF:	1272
Synonyms:	BWR1A; BWSCR1A; HET; IMPT1; ITM; ORCTL2; p45-BWR1A; SLC22A1L; TSSC5



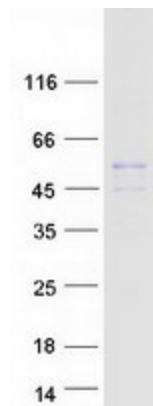
[View online »](#)

Locus ID: 5002
UniProt ID: [Q96B11](#)
Cytogenetics: 11p15.4

Summary: This gene is one of several tumor-suppressing subtransferable fragments located in the imprinted gene domain of 11p15.5, an important tumor-suppressor gene region. Alterations in this region have been associated with the Beckwith-Wiedemann syndrome, Wilms tumor, rhabdomyosarcoma, adrenocortical carcinoma, and lung, ovarian, and breast cancer. This gene is imprinted, with preferential expression from the maternal allele. Mutations in this gene have been found in Wilms' tumor and lung cancer. This protein may act as a transporter of organic cations, and have a role in the transport of chloroquine and quinidine-related compounds in kidney. Several alternatively spliced transcript variants encoding different isoforms have been described. [provided by RefSeq, Oct 2015]

Protein Families: Druggable Genome, Transmembrane

Product images:



Coomassie blue staining of purified SLC22A18 protein (Cat# [TP304889]). The protein was produced from HEK293T cells transfected with SLC22A18 cDNA clone (Cat# [RC204889]) using MegaTran 2.0 (Cat# [TT210002]).