

Product datasheet for PH304877

GRO beta (CXCL2) (NM_002089) Human Mass Spec Standard

Product data:

Product Type:	Mass Spec Standards
Description:	CXCL2 MS Standard C13 and N15-labeled recombinant protein (NP_002080)
Species:	Human
Expression Host:	HEK293
Expression cDNA Clone or AA Sequence:	RC204877
Predicted MW:	11.4 kDa
Protein Sequence:	>RC204877 protein sequence Red=Cloning site Green=Tags(s) MARATLSAAPSNPRLLRVALLLLLLVAASRRRAAGAPLATELRQCQLQTLQGIHLKNIQSVKVKSPGPHCA QTEVIATLKNQKACLNPASPMVKKIIIEKMLKNGKSN TRTRPLEQKLISEEDLAANDILDYKDDDDKV
Tag:	C-Myc/DDK
Purity:	> 80% as determined by SDS-PAGE and Coomassie blue staining
Concentration:	>0.05 µg/µL as determined by microplate BCA method
Labeling Method:	Labeled with [U- 13C6, 15N4]-L-Arginine and [U- 13C6, 15N2]-L-Lysine
Buffer:	25 mM Tris-HCl, 100 mM glycine, pH 7.3
Storage:	Store at -80°C. Avoid repeated freeze-thaw cycles.
Stability:	Stable for 3 months from receipt of products under proper storage and handling conditions.
RefSeq:	NP_002080
RefSeq Size:	1234
RefSeq ORF:	321
Synonyms:	CINC-2a; GRO2; GROb; MGSA-b; MIP-2a; MIP2; MIP2A; SCYB2
Locus ID:	2920
UniProt ID:	P19875 , A0A024RDD9
Cytogenetics:	4q13.3



[View online »](#)

Summary:

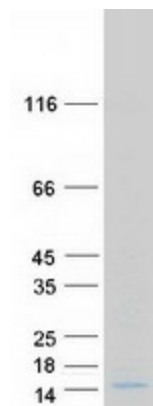
This antimicrobial gene is part of a chemokine superfamily that encodes secreted proteins involved in immunoregulatory and inflammatory processes. The superfamily is divided into four subfamilies based on the arrangement of the N-terminal cysteine residues of the mature peptide. This chemokine, a member of the CXC subfamily, is expressed at sites of inflammation and may suppress hematopoietic progenitor cell proliferation. [provided by RefSeq, Sep 2014]

Protein Families:

Druggable Genome, Secreted Protein

Protein Pathways:

Chemokine signaling pathway, Cytokine-cytokine receptor interaction, NOD-like receptor signaling pathway

Product images:

Coomassie blue staining of purified CXCL2 protein (Cat# [TP304877]). The protein was produced from HEK293T cells transfected with CXCL2 cDNA clone (Cat# [RC204877]) using MegaTran 2.0 (Cat# [TT210002]).