

Product datasheet for PH304863

LAGE3 (NM_006014) Human Mass Spec Standard

Product data:

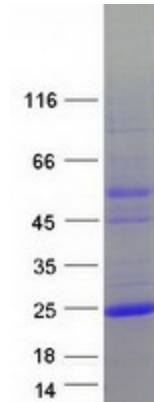
Product Type:	Mass Spec Standards
Description:	LAGE3 MS Standard C13 and N15-labeled recombinant protein (NP_006005)
Species:	Human
Expression Host:	HEK293
Expression cDNA Clone or AA Sequence:	RC204863
Predicted MW:	14.8 kDa
Protein Sequence:	<p>>RC204863 protein sequence</p> <p>Red=Cloning site Green=Tags(s)</p> <p>MRDADADAGGGADGGDGRGGHSCRGGVDTAAAPAGGAPPAHAPGPRDAASAARGSRMRPHIFTLVFPFP TPLEAEIAHGSLAPDAEPHQRVVGKDLTVSGRILVVRWKAEDCRLLRISVINFLDQLSLVVRTMQRFGPP VSR</p> <p>TRTRPLEQKLISEEDLAANDILDYKDDDDKV</p>
Tag:	C-Myc/DDK
Purity:	> 80% as determined by SDS-PAGE and Coomassie blue staining
Concentration:	>0.05 µg/µL as determined by microplate BCA method
Labeling Method:	Labeled with [U- ¹³ C ₆ , ¹⁵ N ₄]-L-Arginine and [U- ¹³ C ₆ , ¹⁵ N ₂]-L-Lysine
Buffer:	25 mM Tris-HCl, 100 mM glycine, pH 7.3
Storage:	Store at -80°C. Avoid repeated freeze-thaw cycles.
Stability:	Stable for 3 months from receipt of products under proper storage and handling conditions.
RefSeq:	NP_006005
RefSeq Size:	964
RefSeq ORF:	429
Synonyms:	CVG5; DXS9879E; DXS9951E; ESO3; GAMOS2; ITBA2; Pcc1
Locus ID:	8270
UniProt ID:	Q14657


[View online »](#)

Cytogenetics: Xq28

Summary: This gene belongs to the ESO/LAGE gene family, members of which are clustered together on chromosome Xq28, and have similar exon-intron structures. Unlike the other family members which are normally expressed only in testis and activated in a wide range of human tumors, this gene is ubiquitously expressed in somatic tissues. The latter, combined with the finding that it is highly conserved in mouse and rat, suggests that the encoded protein is functionally important. An intronless pseudogene with high sequence similarity to this gene is located on chromosome 9. [provided by RefSeq, Jul 2008]

Product images:



Coomassie blue staining of purified LAGE3 protein (Cat# [TP304863]). The protein was produced from HEK293T cells transfected with LAGE3 cDNA clone (Cat# [RC204863]) using MegaTran 2.0 (Cat# [TT210002]).