

Product datasheet for PH304861

MTF1 (NM_005955) Human Mass Spec Standard

Product data:

Product Type:	Mass Spec Standards
Description:	MTF1 MS Standard C13 and N15-labeled recombinant protein (NP_005946)
Species:	Human
Expression Host:	HEK293
Expression cDNA Clone or AA Sequence:	RC204861
Predicted MW:	81 kDa
Protein Sequence:	>RC204861 protein sequence Red=Cloning site Green=Tags(s)

MGEHSPDNNIIYFEAEDELTPDDKMLRFVDKNGLVPSSSGTVYDRTTVLIEQDPGTLEDEDDDGQCGEH
LPFLVGGEEGFHLIDHEAMSQGVVQHIIISPDQIHLTINPGSTPMPRNIIEGATLTLQSECPETKRKEVKRY
QCTFEGCPRTYSTAGNLRTHQKTHRGEYTFVCNQEGCGKAFLTSYSLRIHVRVHTKEKPFECQVQCEKA
FNTLYRLKAHQRLHTGKTFNCESEGCSKYFTTLDLKRKHIRTHTGEKPFRCDDHDGCGKAF AASHHLKTHV
RTHTGERPFFCPSNGCEKTFSTQYSLKSHMKGHDNKGHSYNALPQHNGSEDTNHSCLCLSDLSTLSTSEL
RENSSTTQGQDLSTISPAIIFESMFQNSDDTAIQEDPQQTASL TEFNGDAESVSDVPPSTGNSASLSLP
LVLQPGLEPPQPLL PASAPSAPPPAPSLGPGSQQAAGNPPALLQPPEVPVPHSTQFAANHQEFLPHPQ
APQPIVPGLSVVAGASASAAVASAVAAPAPPQSTTEPLPAMVQTLPLGANSVL TNNPTITITPTPNTAI
LQSSSLVMGEQNLQWILNGATSSPQNEQIQQASKVEKVFVFTTAVPVASSPGSSVQIQGLSVPVIIKQEE
ACQCQCACRDSAKERASSRRKGCSSPPPEPSPQAPDGPQLPAQTFSSAPVPGSSSSTLPSSECEQSRQ
AETPSDPQTETLSAMDVSEFLSLQSLDTPSNLPIEALLQGEEMGLTSSFSK

TRTRPLEQKLISEEDLAANDILDYKDDDDKV

Tag:	C-Myc/DDK
Purity:	> 80% as determined by SDS-PAGE and Coomassie blue staining
Concentration:	>0.05 µg/µL as determined by microplate BCA method
Labeling Method:	Labeled with [U- 13C6, 15N4]-L-Arginine and [U- 13C6, 15N2]-L-Lysine
Buffer:	25 mM Tris-HCl, 100 mM glycine, pH 7.3
Storage:	Store at -80°C. Avoid repeated freeze-thaw cycles.
Stability:	Stable for 3 months from receipt of products under proper storage and handling conditions.
RefSeq:	<u>NP_005946</u>



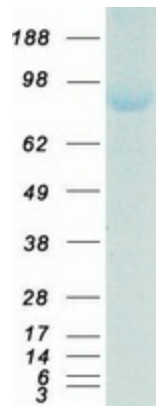
[View online »](#)

RefSeq Size:	7986
RefSeq ORF:	2259
Synonyms:	MTF-1; ZRF
Locus ID:	4520
UniProt ID:	Q14872
Cytogenetics:	1p34.3

Summary: This gene encodes a transcription factor that induces expression of metallothioneins and other genes involved in metal homeostasis in response to heavy metals such as cadmium, zinc, copper, and silver. The protein is a nucleocytoplasmic shuttling protein that accumulates in the nucleus upon heavy metal exposure and binds to promoters containing a metal-responsive element (MRE). [provided by RefSeq, Jul 2008]

Protein Families: Transcription Factors

Product images:



Coomassie blue staining of purified MTF1 protein (Cat# [TP304861]). The protein was produced from HEK293T cells transfected with MTF1 cDNA clone (Cat# [RC204861]) using MegaTran 2.0 (Cat# [TT210002]).