

Product datasheet for PH304859

SCY1 like 3 (SCYL3) (NM_020423) Human Mass Spec Standard

Product data:

Product Type:	Mass Spec Standards
Description:	SCYL3 MS Standard C13 and N15-labeled recombinant protein (NP_065156)
Species:	Human
Expression Host:	HEK293
Expression cDNA Clone or AA Sequence:	RC204859
Predicted MW:	76.7 kDa
Protein Sequence:	>RC204859 protein sequence Red=Cloning site Green=Tags(s)

MGSENSALKSYTLREPPFTLPSGLAVYPAVLQDGKFASVFVYKRENEKVNKA AKHLKTLRHPCLLRFLS
CTVEADGIHLVTERVQPLEVALETLSAEVCAGIYDILLALIFLHDRGHLTHNNVCLSSVFSVSEDGHWKL
GGMETVCKVQSATPEFLRSIQSIRDPASIPPEEMSPEFTTLPECHGHARDAFSFGTLVESLLTILNEQVS
ADVLSSFQQLHSTLLNPIPCKRPALCTLLSHDFFRNDFLEVNFLLKSLTLKSEEEKTEFFKFLDRVSC
LSEELIASRLVPLLLNQLVFAEPVAVKSFLLPYLLGPKKDHAQGETPCLLSPALFQSRVIVLLQLFEVHE
EHVRMVLISHIEAYVEHFTQEQLKKVILPQVLLGLRDTSDSIVAITLHSLAVLVSLLGPEVVVGGERTKI
FKRTAPSF TKNTDLSLEGD PFSQP IKFP INGLSDVKNTSEDS ENFPSSSKKSEEWPDWSEPEEPENQTVN
IQIWPREPCDDVKSQCTTLDVEESSWDDCEPSSLDTKVNPGGGITATKPV TSAEQKPIPALLSLTEESMP
WKSSLPQKISLVQRGDDADQIEPPKVSSQERPLKVPSELGLGEEFTIQVKKKPVKDPMDWFADMIPEIK
PSAAFLILPELRTMVPKDDVSPVMQFSSKFAAAEITEGAEGWEEEGELNWNEDNNW

TRTRPLEQKLISEEDLAANDILDYKDDDDKV

Tag:	C-Myc/DDK
Purity:	> 80% as determined by SDS-PAGE and Coomassie blue staining
Concentration:	>0.05 µg/µL as determined by microplate BCA method
Labeling Method:	Labeled with [U- 13C6, 15N4]-L-Arginine and [U- 13C6, 15N2]-L-Lysine
Buffer:	25 mM Tris-HCl, 100 mM glycine, pH 7.3
Storage:	Store at -80°C. Avoid repeated freeze-thaw cycles.
Stability:	Stable for 3 months from receipt of products under proper storage and handling conditions.
RefSeq:	NP_065156
RefSeq Size:	2928



[View online »](#)

RefSeq ORF: 2064

Synonyms: PACE-1; PACE1

Locus ID: 57147

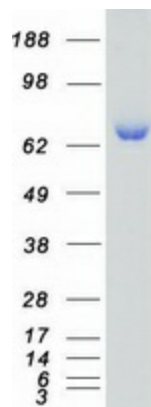
UniProt ID: [Q8IZE3](#)

Cytogenetics: 1q24.2

Summary: This gene encodes a protein with a kinase domain and four HEAT repeats. The encoded protein interacts with the C-terminal domain of ezrin, an ERM protein, and may play a role in cell adhesion and migration. Alternative splicing results in multiple transcript variants encoding multiple isoforms. [provided by RefSeq, Jun 2012]

Protein Families: Druggable Genome, Protein Kinase

Product images:



Coomassie blue staining of purified SCYL3 protein (Cat# [TP304859]). The protein was produced from HEK293T cells transfected with SCYL3 cDNA clone (Cat# [RC204859]) using MegaTran 2.0 (Cat# [TT210002]).