

## Product datasheet for PH304852

### Granzyme A (GZMA) (NM\_006144) Human Mass Spec Standard

#### Product data:

Product Type:	Mass Spec Standards
Description:	GZMA MS Standard C13 and N15-labeled recombinant protein (NP_006135)
Species:	Human
Expression Host:	HEK293
Expression cDNA Clone or AA Sequence:	RC204852
Predicted MW:	29 kDa
Protein Sequence:	>RC204852 protein sequence <b>Red</b> =Cloning site <b>Green</b> =Tags(s)  MRNSYRFLASSLSVVVSLLLIPEDVCEKIIGGNEVTPHSRPMVLLSLDRKTICAGALIAKDWVLTAAHC NLNKRQVILGAHSITREPTKQIMLVKKEFPYPCYDPATREGDLKLLQLTEKAKINKYVTLHLPKKG DVKPGTMCQVAGWGRTHNSASWSDTLREVNITIIDRKVCNDRNHYNFNPVIGMNMVCAGSLRGGDRDSCNG DSGSPLLCEGVFRGVTSTFLENKCGDPRGPGVYILLSKKHLNWIIMTIKGA  <b>TRTRPLEQKLISEEDLAANDILDYKDDDDKV</b>
Tag:	C-Myc/DDK
Purity:	> 80% as determined by SDS-PAGE and Coomassie blue staining
Concentration:	>0.05 µg/µL as determined by microplate BCA method
Labeling Method:	Labeled with [U- <sup>13</sup> C <sub>6</sub> , <sup>15</sup> N <sub>4</sub> ]-L-Arginine and [U- <sup>13</sup> C <sub>6</sub> , <sup>15</sup> N <sub>2</sub> ]-L-Lysine
Buffer:	25 mM Tris-HCl, 100 mM glycine, pH 7.3
Storage:	Store at -80°C. Avoid repeated freeze-thaw cycles.
Stability:	Stable for 3 months from receipt of products under proper storage and handling conditions.
RefSeq:	<a href="#">NP_006135</a>
RefSeq Size:	913
RefSeq ORF:	786
Synonyms:	CTLA3; HFSP
Locus ID:	3001
UniProt ID:	<a href="#">P12544</a>



[View online »](#)

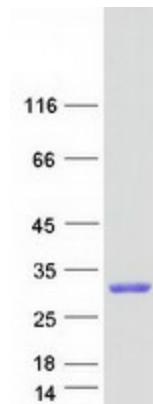
**Cytogenetics:** 5q11.2

**Summary:** Cytolytic T lymphocytes (CTL) and natural killer (NK) cells share the remarkable ability to recognize, bind, and lyse specific target cells. They are thought to protect their host by lysing cells bearing on their surface 'nonself' antigens, usually peptides or proteins resulting from infection by intracellular pathogens. The protein described here is a T cell- and natural killer cell-specific serine protease that may function as a common component necessary for lysis of target cells by cytotoxic T lymphocytes and natural killer cells. [provided by RefSeq, Jul 2008]

**Protein Families:** Druggable Genome, Protease, Secreted Protein

**Protein Pathways:** Neuroactive ligand-receptor interaction

**Product images:**



Coomassie blue staining of purified GZMA protein (Cat# [TP304852]). The protein was produced from HEK293T cells transfected with GZMA cDNA clone (Cat# [RC204852]) using MegaTran 2.0 (Cat# [TT210002]).