

Product datasheet for PH304848

EHD2 (NM_014601) Human Mass Spec Standard

Product data:

Product Type:	Mass Spec Standards
Description:	EHD2 MS Standard C13 and N15-labeled recombinant protein (NP_055416)
Species:	Human
Expression Host:	HEK293
Expression cDNA Clone or AA Sequence:	RC204848
Predicted MW:	61.2 kDa
Protein Sequence:	>RC204848 protein sequence Red=Cloning site Green=Tags(s)

MFSWLKRGARGQQPEAIRTVTLSALKELVRTKLLPLEEHYRFGAFHSPALEDADFDGKPMVLVAGQYSTG
KTSFIQYLLEQEVPGSRVGPPTTDCFVAVMHGDTTEGTVPGNALVDPDKPFRKLNPFNTFLNRFMCAQ
LPNQVLESISIIDTPGILSGAKQVRSGYDFPAVLRWFAERVDLIILLFDAHKLEISDEFSEAIGALRGH
EDKIRVVLNKAADMVETQQLMRVYGALMWALGKVVGTPEVLRVYIGSFWSQPLLVPDNRRLFEEEQDLFR
DIQGLPRHAALRKLNDLVKRARLVRVHAYIISYLKKEMPVFGKENKKQLILKLPVIFAKIQLEHHISP
GDFPDCQKMQELLMAHDFTKFHSLKPKLLEALDEMLTHDIAKLMPLLRQEELESTEVEGVGGAFEGTHMG
PFVERGPDEAMEDGEEGSDDEAEWVVTKDKSKYDEIFYNLAPADGKLSGSKAKTWMVGTCLPNSVLGRIW
KLSVDVDRDGMLDDEEFALASHLIEAKLEGHGLPANLPRRLVPPSKRRHKGSAE

TRTRPLEQKLI SEEDLAANDILDYKDDDDKV

Tag:	C-Myc/DDK
Purity:	> 80% as determined by SDS-PAGE and Coomassie blue staining
Concentration:	>0.05 µg/µL as determined by microplate BCA method
Labeling Method:	Labeled with [U- 13C6, 15N4]-L-Arginine and [U- 13C6, 15N2]-L-Lysine
Buffer:	25 mM Tris-HCl, 100 mM glycine, pH 7.3
Storage:	Store at -80°C. Avoid repeated freeze-thaw cycles.
Stability:	Stable for 3 months from receipt of products under proper storage and handling conditions.
RefSeq:	<u>NP_055416</u>
RefSeq Size:	3601
RefSeq ORF:	1629



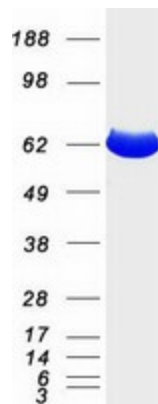
[View online »](#)

Synonyms: PAST2
Locus ID: 30846
UniProt ID: [Q9NZN4](#), [A0A024R0S6](#)
Cytogenetics: 19q13.33

Summary: This gene encodes a member of the EH domain-containing protein family. These proteins are characterized by a C-terminal EF-hand domain, a nucleotide-binding consensus site at the N terminus and a bipartite nuclear localization signal. The encoded protein interacts with the actin cytoskeleton through an N-terminal domain and also binds to an EH domain-binding protein through the C-terminal EH domain. This interaction appears to connect clathrin-dependent endocytosis to actin, suggesting that this gene product participates in the endocytic pathway. [provided by RefSeq, Jul 2008]

Protein Pathways: Endocytosis

Product images:



Coomassie blue staining of purified EHD2 protein (Cat# [TP304848]). The protein was produced from HEK293T cells transfected with EHD2 cDNA clone (Cat# [RC204848]) using MegaTran 2.0 (Cat# [TT210002]).