

Product datasheet for PH304842

TH1L (NELFCD) (NM_198976) Human Mass Spec Standard

Product data:

Product Type:	Mass Spec Standards
Description:	TH1L MS Standard C13 and N15-labeled recombinant protein (NP_945327)
Species:	Human
Expression Host:	HEK293
Expression cDNA Clone or AA Sequence:	RC204842
Predicted MW:	66.2 kDa
Protein Sequence:	>RC204842 protein sequence Red=Cloning site Green=Tags(s)

MAGAVPGAIMDEYYGSAEAWGDEADGGQEQEDDSGEGEDDAEVQEQECLHKFSTRDYIMEPSIFNTLKRYF
QAGGSPENVIQLLSENYTAVAQTVNLLAEWLIQTGVPEVQVQETVENHLKSLLIKHFDPKADSFITEEG
ETPAWLEQMIAHTTWRDLFYKLAEAHPDCLMLNFTVKLISDAGYQGEITSYSTACQQLVFSRVLRTSLA
TILDGGEENLEKNLPEFAKMOVCHGEHTYLFQAAMSVLAQEEQGGSAVRRIAQEVQRFAQEKGHDSQIT
LALGTAASYPRACQALGAMLKSGALNPADITVLFKMFSTMDPPPVELIRVPAFLDLFMQSLFKPGARINQ
DHKHKYIHLAYAAASVETWKKNKRVSIKDELKSTSKAVETVHNLCCNENKGASELVAELSTLYQCIRF
PVMAMGVLKWDVTVSEPRYFQLQTDHTPVHLALLDEISTCHQLLHPQVLQLLVKLFETEHSQLDVMEQL
ELKKTLLDRMVHLLSRGVVLPVVSIRKCLEKLDTDISLIRYFVTEVLDVIAPPYTSDFVQLFLPILEND
SIAGTIKTEGEHDPVTEFIAHCKSNFIMVN

TRTRPLEQKLISEEDLAANDILDYKDDDDKV

Tag:	C-Myc/DDK
Purity:	> 80% as determined by SDS-PAGE and Coomassie blue staining
Concentration:	>0.05 µg/µL as determined by microplate BCA method
Labeling Method:	Labeled with [U- 13C6, 15N4]-L-Arginine and [U- 13C6, 15N2]-L-Lysine
Buffer:	25 mM Tris-HCl, 100 mM glycine, pH 7.3
Storage:	Store at -80°C. Avoid repeated freeze-thaw cycles.
Stability:	Stable for 3 months from receipt of products under proper storage and handling conditions.
RefSeq:	NP_945327
RefSeq Size:	2320
RefSeq ORF:	1770



[View online »](#)

Synonyms: HSPC130; NELF-C; NELF-D; TH1; TH1L

Locus ID: 51497

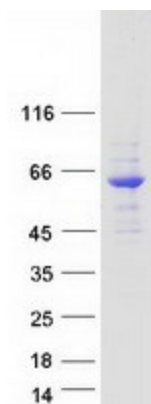
UniProt ID: [Q8IXHZ](#), [H0UI80](#)

Cytogenetics: 20q13.32

Summary: The NELF complex of proteins interacts with the DSIF protein complex to repress transcriptional elongation by RNA polymerase II. The protein encoded by this gene is an essential part of the NELF complex. Alternative translation initiation site usage results in the formation of two isoforms with different N-termini. [provided by RefSeq, Jul 2008]

Protein Families: Transcription Factors

Product images:



Coomassie blue staining of purified NELFCD protein (Cat# [TP304842]). The protein was produced from HEK293T cells transfected with NELFCD cDNA clone (Cat# [RC204842]) using MegaTran 2.0 (Cat# [TT210002]).