

## Product datasheet for PH304829

### RNF25 (NM\_022453) Human Mass Spec Standard

#### Product data:

Product Type:	Mass Spec Standards
Description:	RNF25 MS Standard C13 and N15-labeled recombinant protein (NP_071898)
Species:	Human
Expression Host:	HEK293
Expression cDNA Clone or AA Sequence:	RC204829
Predicted MW:	51.2 kDa
Protein Sequence:	>RC204829 protein sequence Red=Cloning site Green=Tags(s)

MAASASAAAGEEDWVLPSEVEVLESIYLDLQVIKGNRTSPWEIYITLHPATAEDQDSQYVCFVLVQV  
PAEYPHEVPQISIRNPRGLSDEQIHTILQVLGHVAKAGLTAMLVELIEKGKEILTDNNIPHGQCVCICLY  
GFQEKEAFTKPCYHYFHCHCLARYIQHMEQELKAQQEQEQERQHATTKQKAVGVQCPVCREPLVYDLA  
SLKAAPEPQQPMELYQPSAESLRQQEERKRLYQRQQERGGIIDLAEARNRYFISLQPPAPAEPEAVDV  
SKGSQPPSTLAAELSTSPAVQSTLPPPLPVATQHICEKIPGTRSNQQRLGETQKAMLDPKPSRGPWRQP  
ERRHPKGGEGCHAPKGTDRDTQELPPPEGPLKEPMDLKPEPHSQGVEGPPQEKGPQSWQGGPPRRTRDCVRW  
ERSKGRTPGSSYPRLPRGQAYRPGTRRESLGLSKDGS

TRTRPLEQKLISEEDLAANDILDYKDDDDKV

Tag:	C-Myc/DDK
Purity:	> 80% as determined by SDS-PAGE and Coomassie blue staining
Concentration:	>0.05 µg/µL as determined by microplate BCA method
Labeling Method:	Labeled with [U- <sup>13</sup> C <sub>6</sub> , <sup>15</sup> N <sub>4</sub> ]-L-Arginine and [U- <sup>13</sup> C <sub>6</sub> , <sup>15</sup> N <sub>2</sub> ]-L-Lysine
Buffer:	25 mM Tris-HCl, 100 mM glycine, pH 7.3
Storage:	Store at -80°C. Avoid repeated freeze-thaw cycles.
Stability:	Stable for 3 months from receipt of products under proper storage and handling conditions.
RefSeq:	<u>NP_071898</u>
RefSeq Size:	1566
RefSeq ORF:	1377
Synonyms:	AO7



[View online »](#)

Locus ID: 64320

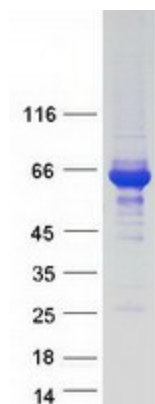
UniProt ID: [Q96BH1](#)

Cytogenetics: 2q35

**Summary:** The protein encoded by this gene contains a RING finger motif. The mouse counterpart of this protein has been shown to interact with RelA, the p65 subunit of NF-kappaB (NFkB), and modulate NFkB-mediated transcription activity. The mouse protein also binds ubiquitin-conjugating enzymes (E2s) and is a substrate for E2-dependent ubiquitination. [provided by RefSeq, Jul 2008]

**Protein Families:** Druggable Genome

### Product images:



Coomassie blue staining of purified RNF25 protein (Cat# [TP304829]). The protein was produced from HEK293T cells transfected with RNF25 cDNA clone (Cat# [RC204829]) using MegaTran 2.0 (Cat# [TT210002]).