

## Product datasheet for PH304812

### HSPC014 (POMP) (NM\_015932) Human Mass Spec Standard

#### Product data:

Product Type:	Mass Spec Standards
Description:	POMP MS Standard C13 and N15-labeled recombinant protein (NP_057016)
Species:	Human
Expression Host:	HEK293
Expression cDNA Clone or AA Sequence:	RC204812
Predicted MW:	15.8 kDa
Protein Sequence:	>RC204812 protein sequence Red=Cloning site Green=Tags(s)  MNARGLGSELKDSIPVTELSASGPFESHDLRKGFCVKNE LLPSHPLELSEKNFQLNQDKMNFSTLRNI QGLFAPLKLQMEFKAVQQVQRLPFLSSNLSLDVLRGNDETIGFEDILNDPSQSEVMGEPHLMVEYKLG L  TRTRPLEQKLI SEEDLAANDILDYKDDDDKV
Tag:	C-Myc/DDK
Purity:	> 80% as determined by SDS-PAGE and Coomassie blue staining
Concentration:	>0.05 µg/µL as determined by microplate BCA method
Labeling Method:	Labeled with [U- <sup>13</sup> C <sub>6</sub> , <sup>15</sup> N <sub>4</sub> ]-L-Arginine and [U- <sup>13</sup> C <sub>6</sub> , <sup>15</sup> N <sub>2</sub> ]-L-Lysine
Buffer:	25 mM Tris-HCl, 100 mM glycine, pH 7.3
Storage:	Store at -80°C. Avoid repeated freeze-thaw cycles.
Stability:	Stable for 3 months from receipt of products under proper storage and handling conditions.
RefSeq:	<a href="#">NP_057016</a>
RefSeq Size:	1477
RefSeq ORF:	423
Synonyms:	C13orf12; HSPC014; PNAS-110; PRAAS2; UMP1
Locus ID:	51371
UniProt ID:	<a href="#">Q9Y244</a>



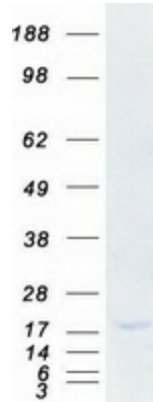
[View online »](#)

**Cytogenetics:** 13q12.3

**Summary:** The protein encoded by this gene is a molecular chaperone that binds 20S preproteasome components and is essential for 20S proteasome formation. The 20S proteasome is the proteolytically active component of the 26S proteasome complex. The encoded protein is degraded before the maturation of the 20S proteasome is complete. A variant in the 5' UTR of this gene has been associated with KLICK syndrome, a rare skin disorder.[provided by RefSeq, Aug 2010]

**Protein Pathways:** Proteasome

**Product images:**



Coomassie blue staining of purified POMP protein (Cat# [TP304812]). The protein was produced from HEK293T cells transfected with POMP cDNA clone (Cat# [RC204812]) using MegaTran 2.0 (Cat# [TT210002]).