

Product datasheet for PH304811

PRAF1 (POLR1E) (NM_022490) Human Mass Spec Standard

Product data:

Product Type:	Mass Spec Standards
Description:	POLR1E MS Standard C13 and N15-labeled recombinant protein (NP_071935)
Species:	Human
Expression Host:	HEK293
Expression cDNA Clone or AA Sequence:	RC204811
Predicted MW:	47.2 kDa
Protein Sequence:	>RC204811 protein sequence Red=Cloning site Green=Tags(s)

MAAEVLPSARWQYCGAPDGSQRAVLVQFSNGKLQSPGNMRFITYENKDSTNPRKRNRILAAETDRLSYV
GNNFGTGALKCNTLCRHFVIGILNKTSGQMEVYDAELFNMQPLFSDVSVESLALASQTKTYREKMDSCIE
AFGTTKQKRALNTRRMNRVGNESLNRAVAKAAETIIDTKGVTALVSDAIHNDLQDDSLYLPPCYDDAAKP
EDVYKFDLLSPAIEYALQSPSEAFRNVTSEIILKMIENSHCTFVIEALKSLPSDVESRDRQARCIWFL
DTLIKFRHRVVKRKSALGPGVPHIINTKLLKHFTCLTYNNGRLRNLISDSMKAKITAYVILALHIHDF
QIDLTVLQRDLKLSKRMMEIAKAMRLKISKRKVSVAAAGSEEDHKLGTLSLPLPPAQTSDRLAKRRKIT

TRTRPLEQKLISEEDLAANDILDYKDDDDKV

Tag:	C-Myc/DDK
Purity:	> 80% as determined by SDS-PAGE and Coomassie blue staining
Concentration:	>0.05 µg/µL as determined by microplate BCA method
Labeling Method:	Labeled with [U- ¹³ C ₆ , ¹⁵ N ₄]-L-Arginine and [U- ¹³ C ₆ , ¹⁵ N ₂]-L-Lysine
Buffer:	25 mM Tris-HCl, 100 mM glycine, pH 7.3
Storage:	Store at -80°C. Avoid repeated freeze-thaw cycles.
Stability:	Stable for 3 months from receipt of products under proper storage and handling conditions.
RefSeq:	<u>NP_071935</u>
RefSeq Size:	1884
RefSeq ORF:	1257
Synonyms:	A49; PAF53; PRAF1; RPA49
Locus ID:	64425



[View online »](#)

UniProt ID: [Q9GZS1](#)

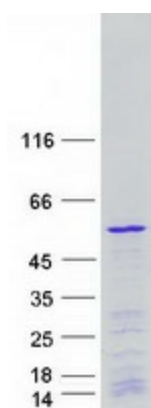
Cytogenetics: 9p13.2

Summary: DNA-dependent RNA polymerase catalyzes the transcription of DNA into RNA using the four ribonucleoside triphosphates as substrates. Component of RNA polymerase I which synthesizes ribosomal RNA precursors. Appears to be involved in the formation of the initiation complex at the promoter by mediating the interaction between Pol I and UBTF/UBF (By similarity).[UniProtKB/Swiss-Prot Function]

Protein Families: Transcription Factors

Protein Pathways: Metabolic pathways, Purine metabolism, Pyrimidine metabolism, RNA polymerase

Product images:



Coomassie blue staining of purified POLR1E protein (Cat# [TP304811]). The protein was produced from HEK293T cells transfected with POLR1E cDNA clone (Cat# [RC204811]) using MegaTran 2.0 (Cat# [TT210002]).