

Product datasheet for PH304801

C2ORF25 (MMADHC) (NM_015702) Human Mass Spec Standard

Product data:

Product Type:	Mass Spec Standards
Description:	MMADHC MS Standard C13 and N15-labeled recombinant protein (NP_056517)
Species:	Human
Expression Host:	HEK293
Expression cDNA Clone or AA Sequence:	RC204801
Predicted MW:	32.9 kDa
Protein Sequence:	>RC204801 protein sequence Red=Cloning site Green=Tags(s) MANVLCNRARLVSYLPGFCSLVKRVVNPKAFSTAGSSGSDESHVAAAPPDICSRTVWPDETMGPFQPQDQ RFQLPGNIGFDCHLNGTASQKSLVHKTLDPVLAEPSSERHEFVMAQYVNEFQGNDAPEVEQINSAEY FESARVECAIQTCPELLLRKDFESLFPVEVANGKLMILTVTQKTKNDMTVWSEEVEIEREVLLKFKINGAKE ICYALRAEGYWADFIDPSSGLAFFGPYTNNTLFETDERYRHLGFSVDDLGCCKVIRHSLWGTHVVVGSIF TNATPDSHIMKKLSGN TRTRPLEQKLISEEDLAANDILDYKDDDDKV
Tag:	C-Myc/DDK
Purity:	> 80% as determined by SDS-PAGE and Coomassie blue staining
Concentration:	>0.05 µg/µL as determined by microplate BCA method
Labeling Method:	Labeled with [U- ¹³ C ₆ , ¹⁵ N ₄]-L-Arginine and [U- ¹³ C ₆ , ¹⁵ N ₂]-L-Lysine
Buffer:	25 mM Tris-HCl, 100 mM glycine, pH 7.3
Storage:	Store at -80°C. Avoid repeated freeze-thaw cycles.
Stability:	Stable for 3 months from receipt of products under proper storage and handling conditions.
RefSeq:	NP_056517
RefSeq Size:	1466
RefSeq ORF:	888
Synonyms:	C2orf25; cblD; CL25022
Locus ID:	27249



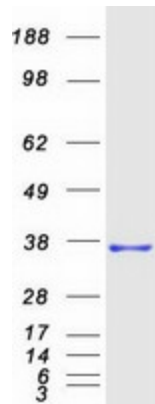
[View online »](#)

UniProt ID: [Q9H3L0](#)

Cytogenetics: 2q23.2

Summary: This gene encodes a mitochondrial protein that is involved in an early step of vitamin B12 metabolism. Vitamin B12 (cobalamin) is essential for normal development and survival in humans. Mutations in this gene cause methylmalonic aciduria and homocystinuria type cblD (MMADHC), a disorder of cobalamin metabolism that is characterized by decreased levels of the coenzymes adenosylcobalamin and methylcobalamin. Pseudogenes have been identified on chromosomes 11 and X.[provided by RefSeq, Nov 2008]

Product images:



Coomassie blue staining of purified MMADHC protein (Cat# [TP304801]). The protein was produced from HEK293T cells transfected with MMADHC cDNA clone (Cat# [RC204801]) using MegaTran 2.0 (Cat# [TT210002]).