

Product datasheet for PH304738

C4BPA (NM_000715) Human Mass Spec Standard

Product data:

Product Type:	Mass Spec Standards
Description:	C4BPA MS Standard C13 and N15-labeled recombinant protein (NP_000706)
Species:	Human
Expression Host:	HEK293
Expression cDNA Clone or AA Sequence:	RC204738
Predicted MW:	67 kDa
Protein Sequence:	>RC204738 protein sequence Red=Cloning site Green=Tags(s)

MHPPKTPSGALHRKRKMAAWPFSRLWKVSDPILFQMTLIAALLPAVLGNCGPPPTLSFAAPMDITLTETR
FKTGTTLKYTCLPGYVRSHSTQTLTNCSDGEWYNTFCIYKRCRHPGELRNGQVEIKTDLDFSGSQIEFSC
SEGFFLIGSTTSRCEVQDRGVGWSHPLPQCEIVKCKPPPDIRNGRHSGEENFYAYGFSVTYSCDPRFSL
GHASISCTVENETIGVWRPSPPTCEKITCRKPDVSHGEMVSGFGPIYNYKDTIVFKCQKGFVLRGSSVIH
CDADSKWNPSPPACEPNSCINLPDIPHASWETYPRPTKEDVYVVGTVLRYRCHPGYKPTTDEPTTICQK
NLRWTPYQGCEALCCPEPKLNNGEITQHRKSRPANHCYVYFGDEISFSCHETSRLFSAICQGDGTWSPRTP
SCGDICNFPPKIAHGHYKQSSSYFFKEEIIYECDKGYILVGQAKLSCSYSHWSAPAPQCKALCRKPELV
NGRLSVDKQDYVEPENVTIQCDSGYGVVGPQSITCSGNRTWYPEVPKCEWETPEGCEQVLTKRMLMQCLP
NPEDVKMALEVYKLSLEIEQLELQRDSARQSTLDKEL

TRTRPLEQKLI SEEDLAANDILDYKDDDDKV

Tag:	C-Myc/DDK
Purity:	> 80% as determined by SDS-PAGE and Coomassie blue staining
Concentration:	>0.05 µg/µL as determined by microplate BCA method
Labeling Method:	Labeled with [U- 13C6, 15N4]-L-Arginine and [U- 13C6, 15N2]-L-Lysine
Buffer:	25 mM Tris-HCl, 100 mM glycine, pH 7.3
Storage:	Store at -80°C. Avoid repeated freeze-thaw cycles.
Stability:	Stable for 3 months from receipt of products under proper storage and handling conditions.
RefSeq:	NP_000706
RefSeq Size:	2256
RefSeq ORF:	1791



[View online »](#)

Synonyms: C4BP; PRP

Locus ID: 722

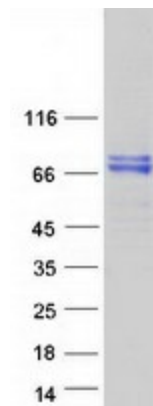
UniProt ID: [P04003](#)

Cytogenetics: 1q32.2

Summary: This gene encodes a member of a superfamily of proteins composed predominantly of tandemly arrayed short consensus repeats of approximately 60 amino acids. Along with a single, unique beta-chain, seven identical alpha-chains encoded by this gene assemble into the predominant isoform of C4b-binding protein, a multimeric protein that controls activation of the complement cascade through the classical pathway. The genes encoding both alpha and beta chains are located adjacent to each other on human chromosome 1 in the regulator of complement activation gene cluster. Two pseudogenes of this gene are also found in the cluster. [provided by RefSeq, Jul 2008]

Protein Pathways: Complement and coagulation cascades

Product images:



Coomassie blue staining of purified C4BPA protein (Cat# [TP304738]). The protein was produced from HEK293T cells transfected with C4BPA cDNA clone (Cat# [RC204738]) using MegaTran 2.0 (Cat# [TT210002]).