

Product datasheet for PH304737

SULT2A1 (NM_003167) Human Mass Spec Standard

Product data:

Product Type:	Mass Spec Standards
Description:	SULT2A1 MS Standard C13 and N15-labeled recombinant protein (NP_003158)
Species:	Human
Expression Host:	HEK293
Expression cDNA Clone or AA Sequence:	RC204737
Predicted MW:	33.8 kDa
Protein Sequence:	>RC204737 protein sequence Red=Cloning site Green=Tags(s)

MSDDFLWFEGIAFPTMGFRSETLRKVRDEFVIRDEDVILTYPKSGTNWLAEILCLMHSKGDWAKWIQSVPIWERSPWVESEIGYTALSETESPRLFSSHLPIQLFPKSFSSKAKVIYLMRNPDRVLSVGYFFWKNMKFIKKPKSWEEYFEWFCQGTVLYGSWFDHIHGWMMPREEKNFLLLSYEELKQDTGRTIEKICQFLGKTLPEEELNLILKNSSFQSMKENKMSNYSLLSVDYVVDKAQLLRKGVSGDWKNHFTVAQAEDFDKLFQEKMADLPRELFPWE

TRTRPLEQKLISEEDLAANDILDYKDDDDKV

Tag:	C-Myc/DDK
Purity:	> 80% as determined by SDS-PAGE and Coomassie blue staining
Concentration:	>0.05 µg/µL as determined by microplate BCA method
Labeling Method:	Labeled with [U- ¹³ C ₆ , ¹⁵ N ₄]-L-Arginine and [U- ¹³ C ₆ , ¹⁵ N ₂]-L-Lysine
Buffer:	25 mM Tris-HCl, 100 mM glycine, pH 7.3
Storage:	Store at -80°C. Avoid repeated freeze-thaw cycles.
Stability:	Stable for 3 months from receipt of products under proper storage and handling conditions.
RefSeq:	<u>NP_003158</u>
RefSeq Size:	1987
RefSeq ORF:	855
Synonyms:	DHEA-ST; DHEA-ST8; DHEAS; HST; hSTa; ST2; ST2A1; ST2A3; STD; SULT2A3
Locus ID:	6822



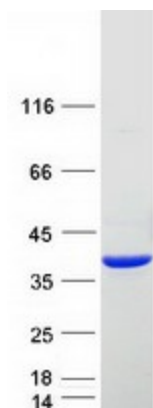
[View online »](#)

UniProt ID: [Q06520](#), [A8K015](#)

Cytogenetics: 19q13.33

Summary: This gene encodes a member of the sulfotransferase family. Sulfotransferases aid in the metabolism of drugs and endogenous compounds by converting these substances into more hydrophilic water-soluble sulfate conjugates that can be easily excreted. This protein catalyzes the sulfation of steroids and bile acids in the liver and adrenal glands, and may have a role in the inherited adrenal androgen excess in women with polycystic ovary syndrome. [provided by RefSeq, Mar 2010]

Product images:



Coomassie blue staining of purified SULT2A1 protein (Cat# [TP304737]). The protein was produced from HEK293T cells transfected with SULT2A1 cDNA clone (Cat# [RC204737]) using MegaTran 2.0 (Cat# [TT210002]).