

Product datasheet for PH304735

Pancreatic Lipase (PNLIP) (NM_000936) Human Mass Spec Standard

Product data:

Product Type:	Mass Spec Standards
Description:	PNLIP MS Standard C13 and N15-labeled recombinant protein (NP_000927)
Species:	Human
Expression Host:	HEK293
Expression cDNA Clone or AA Sequence:	RC204735
Predicted MW:	51.2 kDa
Protein Sequence:	>RC204735 protein sequence Red=Cloning site Green=Tags(s)

MLPLWTL SLLL GAVAGKEVCYERL GCF SDDSPWSGITERPLHILPWSPKDVNTRFLLYTNEPNNFQEVA
ADSSSISGSNFKTRKTRFIIHGFDKGEENWLANVCKNLFKVESVNCICVDWKGGSRTGYTQASQNIRI
VGAEVAYFVEFLQSAFGYSPSNVHVIHSLGAHAAGEAGRRTNGTIGRITGLDPAEPCFQGTPELVRLDP
SDAKFVDVIHTDGAPIV PNLGFGMSQVVGHLDFFPNGGVEMPGCKKNILSQIVDIDGIWEGTRDFAACNH
LRSYKYYTDSIVNPDGFAFGPCASYNVFTANKCFPCPSGGCPQMGHYADRYPGKTNVGVGQKFLYLDTGAS
N FARWRYKVSVTL SGKKVTGHILVSLFGNGKNSKQYEIFKGTLKPDSTHSNEFSDVDVGD LQMVKFIWY
NNVINPTLPRVGASKIIVETNVGKQFNFCSPETVREEVLLTLTPC

TRTRPLEQKLI SEEDLAANDILDYKDDDDKV

Tag:	C-Myc/DDK
Purity:	> 80% as determined by SDS-PAGE and Coomassie blue staining
Concentration:	>0.05 µg/µL as determined by microplate BCA method
Labeling Method:	Labeled with [U- ¹³ C ₆ , ¹⁵ N ₄]-L-Arginine and [U- ¹³ C ₆ , ¹⁵ N ₂]-L-Lysine
Buffer:	25 mM Tris-HCl, 100 mM glycine, pH 7.3
Storage:	Store at -80°C. Avoid repeated freeze-thaw cycles.
Stability:	Stable for 3 months from receipt of products under proper storage and handling conditions.
RefSeq:	<u>NP_000927</u>
RefSeq Size:	1502
RefSeq ORF:	1395
Synonyms:	PL; PNLIPD; PTL



[View online »](#)

Locus ID: 5406

UniProt ID: [P16233](#)

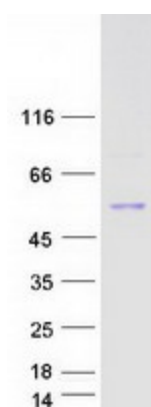
Cytogenetics: 10q25.3

Summary: This gene encodes a member of the lipase family of proteins. The encoded enzyme is secreted by the pancreas and hydrolyzes triglycerides in the small intestine, and is essential for the efficient digestion of dietary fats. Inhibition of the encoded enzyme may prevent high-fat diet-induced obesity in mice and result in weight loss in human patients with obesity. Mutations in this gene cause congenital pancreatic lipase deficiency, a rare disorder characterized by steatorrhea. [provided by RefSeq, Jul 2016]

Protein Families: Druggable Genome, Secreted Protein

Protein Pathways: Glycerolipid metabolism, Metabolic pathways

Product images:



Coomassie blue staining of purified PNLIP protein (Cat# [TP304735]). The protein was produced from HEK293T cells transfected with PNLIP cDNA clone (Cat# [RC204735]) using MegaTran 2.0 (Cat# [TT210002]).