

## Product datasheet for PH304730

### C3AR1 (NM\_004054) Human Mass Spec Standard

#### Product data:

Product Type:	Mass Spec Standards
Description:	C3AR1 MS Standard C13 and N15-labeled recombinant protein (NP_004045)
Species:	Human
Expression Host:	HEK293
Expression cDNA Clone or AA Sequence:	RC204730
Predicted MW:	53.9 kDa
Protein Sequence:	>RC204730 protein sequence Red=Cloning site Green=Tags(s)

MAFSFAETNSTDLLSQPWNEPPVILSMVILSLTFLLGLPGNGLVLVWAGLKMQRVNTIWFHLHLTLADLL  
CCLSLPFLAHLALQGQWPYGRFLCKLIPSIIVLNMFASVFLLTAISLDRCLVVFKPIWCQNHRNVGMAC  
SICGCIWVVAFVMCIPVFVYREIFTTDNHNRGKYKFLSSSLDYPDFYGDPLENRSLENIQPPGEMNDR  
LDPSSFQTNHPWTVPTVFQPQTFQRPSADSLPRGSARLTSQNLYSNVFKPADVVSPKIPSGFPIEDHET  
SPLDNSDAFLSTHLKLFPSASSNSFYSELQGFQDYNYLQGFDDDDQVPTPLVAITITRLVVGFLLPSPV  
IMIACYSFIVFRMQRGRFAKSQSKTFRVAVVVAVFLVCWTPYHIFGVL SLLTDPETPLGKTLMSWDHVC  
IALASANSCFNPFYALLGKDFRKKARQSIQGILEAAFSEELTRSTHCPSSNNVISERNSTTV

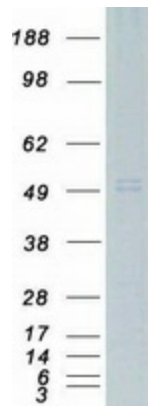
TRTRPLEQKLI SEEDLAANDILDYKDDDDKV

Tag:	C-Myc/DDK
Purity:	> 80% as determined by SDS-PAGE and Coomassie blue staining
Concentration:	>0.05 µg/µL as determined by microplate BCA method
Labeling Method:	Labeled with [U- <sup>13</sup> C <sub>6</sub> , <sup>15</sup> N <sub>4</sub> ]-L-Arginine and [U- <sup>13</sup> C <sub>6</sub> , <sup>15</sup> N <sub>2</sub> ]-L-Lysine
Buffer:	25 mM Tris-HCl, 100 mM glycine, pH 7.3
Storage:	Store at -80°C. Avoid repeated freeze-thaw cycles.
Stability:	Stable for 3 months from receipt of products under proper storage and handling conditions.
RefSeq:	<u>NP_004045</u>
RefSeq Size:	1985
RefSeq ORF:	1446
Synonyms:	AZ3B; C3AR; HNFAG09



[View online »](#)

Locus ID:	719
UniProt ID:	<a href="#">Q16581</a> , <a href="#">A8K2H7</a>
Cytogenetics:	12p13.31
Summary:	C3a is an anaphylatoxin released during activation of the complement system. The protein encoded by this gene is an orphan G protein-coupled receptor for C3a. Binding of C3a by the encoded receptor activates chemotaxis, granule enzyme release, superoxide anion production, and bacterial opsonization. [provided by RefSeq, May 2016]
Protein Families:	Druggable Genome, GPCR, Transmembrane
Protein Pathways:	Complement and coagulation cascades, Neuroactive ligand-receptor interaction

**Product images:**

Coomassie blue staining of purified C3AR1 protein (Cat# [TP304730]). The protein was produced from HEK293T cells transfected with C3AR1 cDNA clone (Cat# [RC204730]) using MegaTran 2.0 (Cat# [TT210002]).