

## Product datasheet for PH304727

### CLIC2 (NM\_001289) Human Mass Spec Standard

#### Product data:

Product Type:	Mass Spec Standards
Description:	CLIC2 MS Standard C13 and N15-labeled recombinant protein (NP_001280)
Species:	Human
Expression Host:	HEK293
Expression cDNA Clone or AA Sequence:	RC204727
Predicted MW:	28.4 kDa
Protein Sequence:	>RC204727 protein sequence Red=Cloning site Green=Tags(s)  MSGLRPGTQVDPEIELFVKAGSDGESIGNCPFCQQLFMILWLKGVKFNVTTVDMTRKPEELKDLAPGTNP PFLVYNKELKTDFFIKIEEFLEQTLAPPRYPHLSPKYKESFDVGCNLFKAFSAYIKNTQKEANKNFEKSL KEFKRLDDYLNTPLLDEIDPDSAEPPVSRRLFLDGDQLTLADCSLLPKLNIKVAACKYRDFDIPA EFGVWRYLHNAYAREEFTHTCPEDKEIENTYANVAKQKS  TRTRPLEQKLI SEEDLAANDILDYKDDDDKV
Tag:	C-Myc/DDK
Purity:	> 80% as determined by SDS-PAGE and Coomassie blue staining
Concentration:	50 ug/ml as determined by BCA
Labeling Method:	Labeled with [U- <sup>13</sup> C <sub>6</sub> , <sup>15</sup> N <sub>4</sub> ]-L-Arginine and [U- <sup>13</sup> C <sub>6</sub> , <sup>15</sup> N <sub>2</sub> ]-L-Lysine
Buffer:	100 mM glycine, 25 mM Tris-HCl, pH 7.3. Store at -80°C. Avoid repeated freeze-thaw cycles. Stable for 3 months from receipt of products under proper storage and handling conditions.
RefSeq:	<u><a href="#">NP_001280</a></u>
RefSeq Size:	2694
RefSeq ORF:	741
Synonyms:	CLIC2b; MRXS32; XAP121
Locus ID:	1193
Cytogenetics:	Xq28



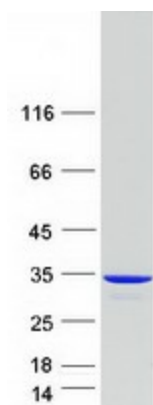
[View online »](#)

**Summary:**

This gene encodes a chloride intracellular channel protein. Chloride channels are a diverse group of proteins that regulate fundamental cellular processes including stabilization of cell membrane potential, transepithelial transport, maintenance of intracellular pH, and regulation of cell volume. This protein plays a role in inhibiting the function of ryanodine receptor 2. A mutation in this gene is the cause of an X-linked form of cognitive disability. [provided by RefSeq, Jul 2017]

**Protein Families:**

Druggable Genome, Ion Channels: Other

**Product images:**

Coomassie blue staining of purified CLIC2 protein (Cat# [TP304727]). The protein was produced from HEK293T cells transfected with CLIC2 cDNA clone (Cat# [RC204727]) using MegaTran 2.0 (Cat# [TT210002]).