

Product datasheet for PH304723

SH2D1A (NM_002351) Human Mass Spec Standard

Product data:

Product Type:	Mass Spec Standards
Description:	SH2D1A MS Standard C13 and N15-labeled recombinant protein (NP_002342)
Species:	Human
Expression Host:	HEK293
Expression cDNA Clone or AA Sequence:	RC204723
Predicted MW:	14.2 kDa
Protein Sequence:	>RC204723 protein sequence Red=Cloning site Green=Tags(s) MDAVAVYHGKISRETGEKLLLATGLDGSYLLRDSSEVPGVYCLCVLYHGYIYTYRVSQTETGWSAETAP GVHKRYFRKIKNLI SAFQKPDQGI VPLQYPVEKKSSARSTQGTG IREDPDVCLKAP TRTRPLEQKLISEEDLAANDILDYKDDDDKV
Tag:	C-Myc/DDK
Purity:	> 80% as determined by SDS-PAGE and Coomassie blue staining
Concentration:	>0.05 µg/µL as determined by microplate BCA method
Labeling Method:	Labeled with [U- 13C6, 15N4]-L-Arginine and [U- 13C6, 15N2]-L-Lysine
Buffer:	25 mM Tris-HCl, 100 mM glycine, pH 7.3
Storage:	Store at -80°C. Avoid repeated freeze-thaw cycles.
Stability:	Stable for 3 months from receipt of products under proper storage and handling conditions.
RefSeq:	NP_002342
RefSeq Size:	2523
RefSeq ORF:	384
Synonyms:	DSHP; EBVS; IMD5; LYP; MTCP1; SAP; SAP/SH2D1A; XLP; XLPD; XLPD1
Locus ID:	4068
UniProt ID:	O60880
Cytogenetics:	Xq25



[View online »](#)

Summary:

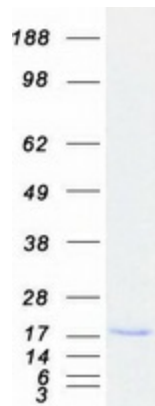
This gene encodes a protein that plays a major role in the bidirectional stimulation of T and B cells. This protein contains an SH2 domain and a short tail. It associates with the signaling lymphocyte-activation molecule, thereby acting as an inhibitor of this transmembrane protein by blocking the recruitment of the SH2-domain-containing signal-transduction molecule SHP-2 to its docking site. This protein can also bind to other related surface molecules that are expressed on activated T, B and NK cells, thereby modifying signal transduction pathways in these cells. Mutations in this gene cause lymphoproliferative syndrome X-linked type 1 or Duncan disease, a rare immunodeficiency characterized by extreme susceptibility to infection with Epstein-Barr virus, with symptoms including severe mononucleosis and malignant lymphoma. Multiple transcript variants encoding different isoforms have been found for this gene. [provided by RefSeq, Jul 2008]

Protein Families:

Druggable Genome

Protein Pathways:

Natural killer cell mediated cytotoxicity

Product images:

Coomassie blue staining of purified SH2D1A protein (Cat# [TP304723]). The protein was produced from HEK293T cells transfected with SH2D1A cDNA clone (Cat# [RC204723]) using MegaTran 2.0 (Cat# [TT210002]).