

Product datasheet for PH304699

beta Sarcoglycan (SGCB) (NM_000232) Human Mass Spec Standard

Product data:

Product Type:	Mass Spec Standards
Description:	SGCB MS Standard C13 and N15-labeled recombinant protein (NP_000223)
Species:	Human
Expression Host:	HEK293
Expression cDNA Clone or AA Sequence:	RC204699
Predicted MW:	34.8 kDa
Protein Sequence:	>RC204699 protein sequence Red=Cloning site Green=Tags(s) MAAAAAAAAAEQSSNGPVKKSMEKAVERRSVNKEHNSNFKAGYIPIDEDRLHKTGLRGRKGNLAICVII LLFILAVINLIITLVIWAVIRIGPNGCDSEMFHESGLLRFKQVSDMGVIHPLYKSTVGGRRNENLVITGN NQPIVFQGGTTKLSVENNKTSITSDIGMQFFDPRTQNILFSTDYETHEFHLPSTVSGVKSINLVQKASTERITS NATSDLNIKVDGRAIVRGNEGVFIMGKTIIEFHMGGMELKAENSIILNGSVMVSTTRLPSSSSGDLGSG DWVRYKLCMCADGTLFKVQVTSQNMGCQISDNPCGNTH TRTRPLEQKLISEEDLAANDILDYKDDDDKV
Tag:	C-Myc/DDK
Purity:	> 80% as determined by SDS-PAGE and Coomassie blue staining
Concentration:	>0.05 µg/µL as determined by microplate BCA method
Labeling Method:	Labeled with [U- ¹³ C ₆ , ¹⁵ N ₄]-L-Arginine and [U- ¹³ C ₆ , ¹⁵ N ₂]-L-Lysine
Buffer:	25 mM Tris-HCl, 100 mM glycine, pH 7.3
Storage:	Store at -80°C. Avoid repeated freeze-thaw cycles.
Stability:	Stable for 3 months from receipt of products under proper storage and handling conditions.
RefSeq:	NP_000223
RefSeq Size:	4295
RefSeq ORF:	954
Synonyms:	A3b; LGMD2E; LGMDR4; SGC
Locus ID:	6443



[View online »](#)

UniProt ID: [Q16585](#), [Q5U0N0](#)

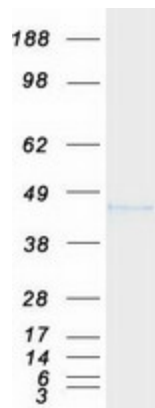
Cytogenetics: 4q12

Summary: This gene encodes a member of the sarcoglycan family. Sarcoglycans are transmembrane components in the dystrophin-glycoprotein complex which help stabilize the muscle fiber membranes and link the muscle cytoskeleton to the extracellular matrix. Mutations in this gene have been associated with limb-girdle muscular dystrophy.[provided by RefSeq, Oct 2008]

Protein Families: Druggable Genome, Transmembrane

Protein Pathways: Arrhythmogenic right ventricular cardiomyopathy (ARVC), Dilated cardiomyopathy, Hypertrophic cardiomyopathy (HCM), Viral myocarditis

Product images:



Coomassie blue staining of purified SGCB protein (Cat# [TP304699]). The protein was produced from HEK293T cells transfected with SGCB cDNA clone (Cat# [RC204699]) using MegaTran 2.0 (Cat# [TT210002]).