

Product datasheet for PH304697

SLPI (NM_003064) Human Mass Spec Standard

Product data:

Product Type:	Mass Spec Standards
Description:	SLPI MS Standard C13 and N15-labeled recombinant protein (NP_003055)
Species:	Human
Expression Host:	HEK293
Expression cDNA Clone or AA Sequence:	RC204697
Predicted MW:	14.3 kDa
Protein Sequence:	>RC204697 protein sequence Red =Cloning site Green =Tags(s) MKSSGLFPFLVLLALGTLAPWAVEGSGKSFKAGVCPKSAQCLRYKKPECQSDWQCPGKKRCCPDTCGI KCLDPVDTPNPTRRKPVKCPVTYQCLMLNPPNFCMDGQCKRDLKCCMGKSCVSPVKA TR TRPLEQKLISEEDLAANDILDYKDDDDKV
Tag:	C-Myc/DDK
Purity:	> 80% as determined by SDS-PAGE and Coomassie blue staining
Concentration:	>0.05 µg/µL as determined by microplate BCA method
Labeling Method:	Labeled with [U- 13C6, 15N4]-L-Arginine and [U- 13C6, 15N2]-L-Lysine
Buffer:	25 mM Tris-HCl, 100 mM glycine, pH 7.3
Storage:	Store at -80°C. Avoid repeated freeze-thaw cycles.
Stability:	Stable for 3 months from receipt of products under proper storage and handling conditions.
RefSeq:	<u>NP_003055</u>
RefSeq Size:	625
RefSeq ORF:	396
Synonyms:	ALK1; ALP; BLPI; HUSI; HUSI-I; MPI; WAP4; WFDC4
Locus ID:	6590
UniProt ID:	<u>P03973</u>
Cytogenetics:	20q13.12



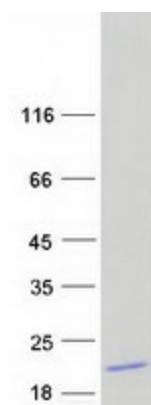
[View online »](#)

Summary:

This gene encodes a secreted inhibitor which protects epithelial tissues from serine proteases. It is found in various secretions including seminal plasma, cervical mucus, and bronchial secretions, and has affinity for trypsin, leukocyte elastase, and cathepsin G. Its inhibitory effect contributes to the immune response by protecting epithelial surfaces from attack by endogenous proteolytic enzymes. This antimicrobial protein has antibacterial, antifungal and antiviral activity. [provided by RefSeq, Nov 2014]

Protein Families:

Secreted Protein

Product images:

Coomassie blue staining of purified SLPI protein (Cat# [TP304697]). The protein was produced from HEK293T cells transfected with SLPI cDNA clone (Cat# [RC204697]) using MegaTran 2.0 (Cat# [TT210002]).