

## Product datasheet for PH304696

### CASQ1 (NM\_001231) Human Mass Spec Standard

#### Product data:

Product Type:	Mass Spec Standards
Description:	CASQ1 MS Standard C13 and N15-labeled recombinant protein (NP_001222)
Species:	Human
Expression Host:	HEK293
Expression cDNA Clone or AA Sequence:	RC204696
Predicted MW:	44.5 kDa
Protein Sequence:	>RC204696 protein sequence Red=Cloning site Green=Tags(s)
	<p>MGPRAVPGLRLALLLLLVLGTPKSGVQGQEGLDPEYDGVDRVINVNAKNYKNVFKKYEVLLALLYHEPPE            DDKASQRQFEMEELILELAAQVLEDKGVGFLVDSEKDAAVAKKLGLETVDSMYVFKGDEVIEYDGEFSA            DTIVEFLLDVLEDPVELIEGERELQAFENIEDEIKLIGYFKSKDSEHYKAFEDAAEEFHPYIPFFATFDS            KVAKKLTLKLNEDFYAEFMEEPVTIPDKPNSEEEIVNFVEEHRRLRKLKPSMYETWEDDMDGIHIV            AFEEADPDGFEFLETAKAVAQDNTENPDLIIWIDPDDFLLVPYWEKTFDIDLAPQIGVVNVTADDS            VWMEMDDEEDLPSAELEDWLEDVLEGEINTEDDDDDDDD</p> <p>TRTRPLEQKLISEEDLAANDILDYKDDDDKV</p>
Tag:	C-Myc/DDK
Purity:	> 80% as determined by SDS-PAGE and Coomassie blue staining
Concentration:	>0.05 µg/µL as determined by microplate BCA method
Labeling Method:	Labeled with [U- <sup>13</sup> C <sub>6</sub> , <sup>15</sup> N <sub>4</sub> ]-L-Arginine and [U- <sup>13</sup> C <sub>6</sub> , <sup>15</sup> N <sub>2</sub> ]-L-Lysine
Buffer:	25 mM Tris-HCl, 100 mM glycine, pH 7.3
Storage:	Store at -80°C. Avoid repeated freeze-thaw cycles.
Stability:	Stable for 3 months from receipt of products under proper storage and handling conditions.
RefSeq:	<a href="#">NP_001222</a>
RefSeq Size:	1993
RefSeq ORF:	1170
Synonyms:	CASQ; PDIB1; VMCQA
Locus ID:	844



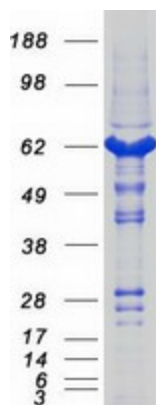
[View online »](#)

UniProt ID: [P31415](#)

Cytogenetics: 1q23.2

**Summary:** This gene encodes the skeletal muscle specific member of the calsequestrin protein family. Calsequestrin functions as a luminal sarcoplasmic reticulum calcium sensor in both cardiac and skeletal muscle cells. This protein, also known as calmitine, functions as a calcium regulator in the mitochondria of skeletal muscle. This protein is absent in patients with Duchenne and Becker types of muscular dystrophy. [provided by RefSeq, Jun 2013]

### Product images:



Coomassie blue staining of purified CASQ1 protein (Cat# [TP304696]). The protein was produced from HEK293T cells transfected with CASQ1 cDNA clone (Cat# [RC204696]) using MegaTran 2.0 (Cat# [TT210002]).