

## Product datasheet for PH304687

### LHFPL6 (NM\_005780) Human Mass Spec Standard

#### Product data:

Product Type:	Mass Spec Standards
Description:	LHFP MS Standard C13 and N15-labeled recombinant protein (NP_005771)
Species:	Human
Expression Host:	HEK293
Expression cDNA Clone or AA Sequence:	RC204687
Predicted MW:	21.6 kDa
Protein Sequence:	>RC204687 protein sequence <b>Red</b> =Cloning site <b>Green</b> =Tags(s)  MASSLTCTGVIWALLSFLCAATSCVGFMPYWLWGSQLGKPVSFGTFRRCYSPVHDESRQMMVMVEECGR YASFQGIPTSAEWRICTIVTGLGCGLLLLVALTALMGCCVSDLISRTVGRVAGGIQFLGGLLIGAGCALYP LGWDEEVRQTCGYTSGQFDLKGCEIGWAYYCTGAGATAAMLLCTWLACFSGKKQKHYPY  <b>TRTRPLEQKLISEEDLAANDILDYKDDDDKV</b>
Tag:	C-Myc/DDK
Purity:	> 80% as determined by SDS-PAGE and Coomassie blue staining
Concentration:	>0.05 µg/µL as determined by microplate BCA method
Labeling Method:	Labeled with [U- 13C6, 15N4]-L-Arginine and [U- 13C6, 15N2]-L-Lysine
Buffer:	25 mM Tris-HCl, 100 mM glycine, pH 7.3
Storage:	Store at -80°C. Avoid repeated freeze-thaw cycles.
Stability:	Stable for 3 months from receipt of products under proper storage and handling conditions.
RefSeq:	<a href="#">NP_005771</a>
RefSeq Size:	2180
RefSeq ORF:	600
Synonyms:	LHFP
Locus ID:	10186
UniProt ID:	<a href="#">Q9Y693</a> , <a href="#">A0A024RDR1</a>



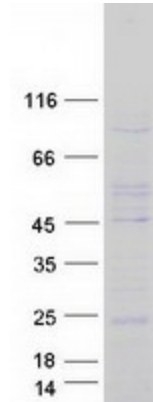
[View online »](#)

**Cytogenetics:** 13q13.3-q14.11

**Summary:** This gene is a member of the lipoma HMGIC fusion partner (LHFP) gene family, which is a subset of the superfamily of tetraspan transmembrane protein encoding genes. This gene is fused to a high-mobility group gene in a translocation-associated lipoma. Mutations in another LHFP-like gene result in deafness in humans and mice. Alternatively spliced transcript variants have been found; however, their full-length nature is not known. [provided by RefSeq, Jul 2008]

**Protein Families:** Transmembrane

**Product images:**



Coomassie blue staining of purified LHFPL6 protein (Cat# [TP304687]). The protein was produced from HEK293T cells transfected with LHFPL6 cDNA clone (Cat# [RC204687]) using MegaTran 2.0 (Cat# [TT210002]).