

## Product datasheet for PH304686

### MD2 (LY96) (NM\_015364) Human Mass Spec Standard

#### Product data:

Product Type:	Mass Spec Standards
Description:	LY96 MS Standard C13 and N15-labeled recombinant protein (NP_056179)
Species:	Human
Expression Host:	HEK293
Expression cDNA Clone or AA Sequence:	RC204686
Predicted MW:	18.4 kDa
Protein Sequence:	>RC204686 protein sequence Red=Cloning site Green=Tags(s)  MLPFLFFSTLFSSIFTEAQKQYWVCNSSDASISYTYCDKMQYPISINVNPCIELKGSKGLLHIFYIPRRD LKQLYFNLYITVNTMNLPKRKEVICRGSDDDYSFCRALKGETVNTTISFSFKGIKFSKGKYKCVVEAISG SPEEMLCLEFVILHQPNNSN  TRTRPLEQKLI SEEDLAANDILDYKDDDDKV
Tag:	C-Myc/DDK
Purity:	> 80% as determined by SDS-PAGE and Coomassie blue staining
Concentration:	>0.05 µg/µL as determined by microplate BCA method
Labeling Method:	Labeled with [U- 13C6, 15N4]-L-Arginine and [U- 13C6, 15N2]-L-Lysine
Buffer:	25 mM Tris-HCl, 100 mM glycine, pH 7.3
Storage:	Store at -80°C. Avoid repeated freeze-thaw cycles.
Stability:	Stable for 3 months from receipt of products under proper storage and handling conditions.
RefSeq:	<a href="#">NP_056179</a>
RefSeq Size:	642
RefSeq ORF:	480
Synonyms:	ESOP-1; ly-96; MD-2; MD2
Locus ID:	23643
UniProt ID:	<a href="#">Q9Y6Y9</a>



[View online »](#)

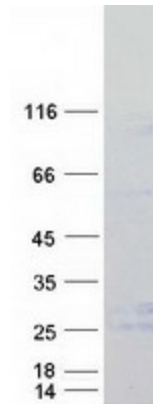
**Cytogenetics:** 8q21.11

**Summary:** This gene encodes a protein which associates with toll-like receptor 4 on the cell surface and confers responsiveness to lipopolysaccharide (LPS), thus providing a link between the receptor and LPS signaling. Studies of the mouse ortholog suggest that this gene may be involved in endotoxin neutralization. Alternative splicing results in multiple transcript variants encoding different isoforms. [provided by RefSeq, Sep 2010]

**Protein Families:** Secreted Protein

**Protein Pathways:** Pathogenic Escherichia coli infection, Toll-like receptor signaling pathway

### Product images:



Coomassie blue staining of purified LY96 protein (Cat# [TP304686]). The protein was produced from HEK293T cells transfected with LY96 cDNA clone (Cat# [RC204686]) using MegaTran 2.0 (Cat# [TT210002]).