

Product datasheet for PH304684

PGCP (CPQ) (NM_016134) Human Mass Spec Standard

Product data:

Product Type:	Mass Spec Standards
Description:	PGCP MS Standard C13 and N15-labeled recombinant protein (NP_057218)
Species:	Human
Expression Host:	HEK293
Expression cDNA Clone or AA Sequence:	RC204684
Predicted MW:	51.9 kDa
Protein Sequence:	>RC204684 protein sequence Red=Cloning site Green=Tags(s)

MKFLIFAFFGGVHLLSLCSGKAICKNGISKRTFEEIKEEIASCGDVAKAIINLAVYGKAQNRSYERLALL
VDTVGPRLSGSKNLEKAIQIMYQNLQQDGLKVVHLEPVRIPHWERGEESAVMLEPRIHKIAILGLGSSIG
TPPEGITAEVLVVTSFDELQRRASEARGKIVVYNQPYINYSRTVQYRTQGAVEAAKVGALASLIRSVASF
SIYSPHTGIQEYQDGVPKIPTACITVEDAEMMSRMASHGIKIVIQKMGAKTYPDTDSFNTVAEITGSKY
PEQVVLVSGHLDSWDVGGAMDDGGGAFISWEALSLIKDLGLRPKRTLRLVLWTAEQGGVGAFQYYQLH
KVNISNYSLVMESDAGTFLPTGLQFTGSEKARAIMEEVMSLLQPLNITQVLSHGEGTDINFWIQAGVPGA
SLLDDLKYYFFHHSHGDTMTVMDPKQMNVAADVAVVSVVADMEMLPRS

TRTRPLEQKLISEEDLAANDILDYKDDDDKV

Tag:	C-Myc/DDK
Purity:	> 80% as determined by SDS-PAGE and Coomassie blue staining
Concentration:	>0.05 µg/µL as determined by microplate BCA method
Labeling Method:	Labeled with [U- ¹³ C ₆ , ¹⁵ N ₄]-L-Arginine and [U- ¹³ C ₆ , ¹⁵ N ₂]-L-Lysine
Buffer:	25 mM Tris-HCl, 100 mM glycine, pH 7.3
Storage:	Store at -80°C. Avoid repeated freeze-thaw cycles.
Stability:	Stable for 3 months from receipt of products under proper storage and handling conditions.
RefSeq:	<u>NP_057218</u>
RefSeq Size:	1949
RefSeq ORF:	1416
Synonyms:	LDP; PGCP



[View online »](#)

Locus ID: 10404

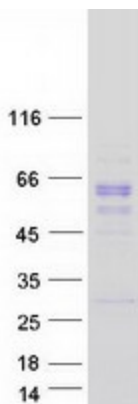
UniProt ID: [Q9Y646](#), [A0A024R9B8](#)

Cytogenetics: 8q22.1

Summary: This gene encodes a metallopeptidase that belongs to the peptidase M28 family. The encoded protein may catalyze the cleavage of dipeptides with unsubstituted terminals into amino acids. [provided by RefSeq, Jul 2013]

Protein Families: Protease

Product images:



Coomassie blue staining of purified CPQ protein (Cat# [TP304684]). The protein was produced from HEK293T cells transfected with CPQ cDNA clone (Cat# [RC204684]) using MegaTran 2.0 (Cat# [TT210002]).