

Product datasheet for PH304667

SS18L2 (NM_016305) Human Mass Spec Standard

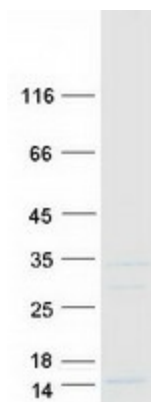
Product data:

Product Type:	Mass Spec Standards
Description:	SS18L2 MS Standard C13 and N15-labeled recombinant protein (NP_057389)
Species:	Human
Expression Host:	HEK293
Expression cDNA Clone or AA Sequence:	RC204667
Predicted MW:	8.8 kDa
Protein Sequence:	<p>>RC204667 protein sequence</p> <p>Red=Cloning site Green=Tags(s)</p> <p>MSVAFVPDWLRGKAEVNQETIQRLLEENDQLIRCIVEYQNKGRGNECVQYQHVLRNLIYLATIADASPT STSKAME</p> <p>TRTRPLEQKLISEEDLAANDILDYKDDDDKV</p>
Tag:	C-Myc/DDK
Purity:	> 80% as determined by SDS-PAGE and Coomassie blue staining
Concentration:	>0.05 µg/µL as determined by microplate BCA method
Labeling Method:	Labeled with [U- 13C6, 15N4]-L-Arginine and [U- 13C6, 15N2]-L-Lysine
Buffer:	25 mM Tris-HCl, 100 mM glycine, pH 7.3
Storage:	Store at -80°C. Avoid repeated freeze-thaw cycles.
Stability:	Stable for 3 months from receipt of products under proper storage and handling conditions.
RefSeq:	NP_057389
RefSeq Size:	822
RefSeq ORF:	231
Synonyms:	KIAA-iso
Locus ID:	51188
UniProt ID:	Q9UHA2 , A0A024R2Q8
Cytogenetics:	3p22.1


[View online »](#)

Summary:

Synovial sarcomas occur most frequently in the extremities around large joints. More than 90% of cases have a recurrent and specific chromosomal translocation, t(X;18)(p11.2;q11.2), in which the 5-prime end of the SS18 gene (MIM 600192) is fused in-frame to the 3-prime end of the SSX1 (MIM 312820), SSX2 (MIM 300192), or SSX4 (MIM 300326) gene. The SS18L2 gene is homologous to SS18.[supplied by OMIM, Jul 2002]

Product images:


Coomassie blue staining of purified SS18L2 protein (Cat# [TP304667]). The protein was produced from HEK293T cells transfected with SS18L2 cDNA clone (Cat# [RC204667]) using MegaTran 2.0 (Cat# [TT210002]).