

Product datasheet for PH304642

SERPINA10 (NM_016186) Human Mass Spec Standard

Product data:

| | |
|---------------------------------------|---|
| Product Type: | Mass Spec Standards |
| Description: | SERPINA10 MS Standard C13 and N15-labeled recombinant protein (NP_057270) |
| Species: | Human |
| Expression Host: | HEK293 |
| Expression cDNA Clone or AA Sequence: | RC204642 |
| Predicted MW: | 50.5 kDa |
| Protein Sequence: | >RC204642 representing NM_016186 Red=Cloning site Green=Tags(s) |

MKVVPSLLLSVLLAQVWLVPLAPSPQSPETPAPQNQTSRVVQAPKEEEDEQEASEEKASEEEKAWLMA
SRQQLAKETSNGFSLLRKISMRHDGNMVFSPFGMSLAMTGLMLGATGPTETQIKRGLHLQALKPTKPG
LPSLFKGLRETLNRLELGLTQGSFAFIHKDFDVKETFNLSKRYFDTECVPMNFRNASQAKRLMNHYIN
KETRGKIPKLFDEINPETKLILVDYILFKGKWLTPFDPVFTEVDTFHLDKYKTIKVPMMYGAGKFASTFD
KNFRCHVLLKLPYQGNATMLVVLMEKMGDHLALEDYLTDDLVTWLRNMRNMEVFFPKFKLDQKYEMHE
LLRQMGIRRIFFSPFADLSELSATGRNLQVSRVLQRTVIEVDERGTEAVAGILSEITAYSMPPIKVDPRP
HFMIYEETSGMLLFLGRVNPPLL

TRTRPLEQKLI SEEDLAANDILDYKDDDDKV

| | |
|------------------|--|
| Tag: | C-Myc/DDK |
| Purity: | > 80% as determined by SDS-PAGE and Coomassie blue staining |
| Concentration: | >0.05 µg/µL as determined by microplate BCA method |
| Labeling Method: | Labeled with [U- ¹³ C ₆ , ¹⁵ N ₄]-L-Arginine and [U- ¹³ C ₆ , ¹⁵ N ₂]-L-Lysine |
| Buffer: | 25 mM Tris-HCl, 100 mM glycine, pH 7.3 |
| Storage: | Store at -80°C. Avoid repeated freeze-thaw cycles. |
| Stability: | Stable for 3 months from receipt of products under proper storage and handling conditions. |
| RefSeq: | <u>NP_057270</u> |
| RefSeq Size: | 2466 |
| RefSeq ORF: | 1332 |
| Synonyms: | PZI; ZPI |



[View online »](#)

Locus ID: 51156

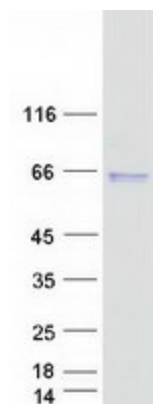
UniProt ID: [Q9UK55](#), [A0A024R6I6](#)

Cytogenetics: 14q32.13

Summary: The protein encoded by this gene belongs to the serpin family. It is predominantly expressed in the liver and secreted in plasma. It inhibits the activity of coagulation factors Xa and XIa in the presence of protein Z, calcium and phospholipid. Mutations in this gene are associated with venous thrombosis. Alternatively spliced transcript variants have been found for this gene.[provided by RefSeq, May 2010]

Protein Families: Druggable Genome, Secreted Protein

Product images:



Coomassie blue staining of purified SERPINA10 protein (Cat# [TP304642]). The protein was produced from HEK293T cells transfected with SERPINA10 cDNA clone (Cat# [RC204642]) using MegaTran 2.0 (Cat# [TT210002]).