

## Product datasheet for PH304635

### RBP4 (NM\_006744) Human Mass Spec Standard

#### Product data:

Product Type:	Mass Spec Standards
Description:	RBP4 MS Standard C13 and N15-labeled recombinant protein (NP_006735)
Species:	Human
Expression Host:	HEK293
Expression cDNA Clone or AA Sequence:	RC204635
Predicted MW:	23 kDa
Protein Sequence:	>RC204635 protein sequence Red=Cloning site Green=Tags(s)  MKVWVWLFLLAALGSGRAERDCRVSSFRVKENFDKARFSGTWYAMAKKDPEGLFLQDNIVAEFSVDETGQ MSATAKGRVRLNNDVVCADMVGTFTDTEPAKFKMKYWGVSFLQKGNDDHWIVDTDYDTYAVQYSCRL LNLDTGTCADSYFVFSRDPNGLPPEAQKIVRQRQEELCLARQYRLIVHNGYCDGRSERNLL  TRTRPLEQKLI SEEDLAANDILDYKDDDDKV
Tag:	C-Myc/DDK
Purity:	> 80% as determined by SDS-PAGE and Coomassie blue staining
Concentration:	>0.05 µg/µL as determined by microplate BCA method
Labeling Method:	Labeled with [U- 13C6, 15N4]-L-Arginine and [U- 13C6, 15N2]-L-Lysine
Buffer:	25 mM Tris-HCl, 100 mM glycine, pH 7.3
Storage:	Store at -80°C. Avoid repeated freeze-thaw cycles.
Stability:	Stable for 3 months from receipt of products under proper storage and handling conditions.
RefSeq:	<a href="#">NP_006735</a>
RefSeq Size:	941
RefSeq ORF:	603
Synonyms:	MCOPCB10; RDCCAS
Locus ID:	5950
UniProt ID:	<a href="#">P02753</a>



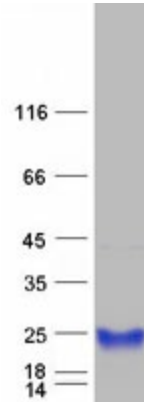
[View online »](#)

**Cytogenetics:** 10q23.33

**Summary:** This protein belongs to the lipocalin family and is the specific carrier for retinol (vitamin A alcohol) in the blood. It delivers retinol from the liver stores to the peripheral tissues. In plasma, the RBP-retinol complex interacts with transthyretin which prevents its loss by filtration through the kidney glomeruli. A deficiency of vitamin A blocks secretion of the binding protein posttranslationally and results in defective delivery and supply to the epidermal cells. [provided by RefSeq, Jul 2008]

**Protein Families:** Druggable Genome, Secreted Protein

**Product images:**



Coomassie blue staining of purified RBP4 protein (Cat# [TP304635]). The protein was produced from HEK293T cells transfected with RBP4 cDNA clone (Cat# [RC204635]) using MegaTran 2.0 (Cat# [TT210002]).