

Product datasheet for PH304632

IDI2 (NM_033261) Human Mass Spec Standard

Product data:

Product Type:	Mass Spec Standards
Description:	IDI2 MS Standard C13 and N15-labeled recombinant protein (NP_150286)
Species:	Human
Expression Host:	HEK293
Expression cDNA Clone or AA Sequence:	RC204632
Predicted MW:	26.8 kDa
Protein Sequence:	>RC204632 protein sequence Red=Cloning site Green=Tags(s) MSDINLDWVDRRQLQRLEEMLIIVVDENDKVI GADTKRNCHLNENIEKGLLHRAF SVVLFNTKNRILIQQR SDTKVTFPGYFTDSCSSHPLYNPAELEEKDAIGVRRAAQRRLQ AELGIPGEQISPEDIVFMTIYHHKAKS DRIWGEHEICYLLLVKKNVTLNPD PSETKSILYLSQEELWELLEREARGEVKVTPWLRTIAERFLYRWWP HLDDVTPFVELHKIHRV TRTRPLEQKLI SEEDLAANDILDYKDDDDKV
Tag:	C-Myc/DDK
Purity:	> 80% as determined by SDS-PAGE and Coomassie blue staining
Concentration:	>0.05 µg/µL as determined by microplate BCA method
Labeling Method:	Labeled with [U- ¹³ C ₆ , ¹⁵ N ₄]-L-Arginine and [U- ¹³ C ₆ , ¹⁵ N ₂]-L-Lysine
Buffer:	25 mM Tris-HCl, 100 mM glycine, pH 7.3
Storage:	Store at -80°C. Avoid repeated freeze-thaw cycles.
Stability:	Stable for 3 months from receipt of products under proper storage and handling conditions.
RefSeq:	NP_150286
RefSeq Size:	1359
RefSeq ORF:	681
Synonyms:	IPPI2
Locus ID:	91734
UniProt ID:	Q9BXS1



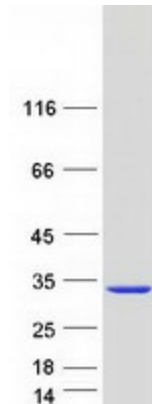
[View online »](#)

Cytogenetics: 10p15.3

Summary: The protein encoded by this gene catalyzes the conversion of isopentenyl diphosphate to dimethylallyl diphosphate, which is a precursor for the synthesis of cholesterol and other isoprenoids. This gene, which is a product of an ancestral gene duplication event, encodes a protein that may be involved in the aggregation of alpha-synuclein in the cerebral cortex of patients with Lewy body disease. In addition, segmental copy number gains in this locus have been associated with sporadic amyotrophic lateral sclerosis. [provided by RefSeq, Jul 2016]

Protein Pathways: Metabolic pathways, Terpenoid backbone biosynthesis

Product images:



Coomassie blue staining of purified ID12 protein (Cat# [TP304632]). The protein was produced from HEK293T cells transfected with ID12 cDNA clone (Cat# [RC204632]) using MegaTran 2.0 (Cat# [TT210002]).