

Product datasheet for PH304625

LGALS14 (NM_020129) Human Mass Spec Standard

Product data:

Product Type:	Mass Spec Standards
Description:	LGALS14 MS Standard C13 and N15-labeled recombinant protein (NP_064514)
Species:	Human
Expression Host:	HEK293
Expression cDNA Clone or AA Sequence:	RC204625
Predicted MW:	16.1 kDa
Protein Sequence:	>RC204625 protein sequence Red=Cloning site Green=Tags(s) MSSLPVPYTLPVSLPVGSCVITITGTPILTFVKDPQLEVNFTGMDESDIAFQFRLHFGHPAIMNSRVFG IWRYEKCYLLPFEDGKPFELCIYVRHKEYKVMVNGQRIYNFAHRFPASVKMLQVLRDISLTRVLISD TRTRPLEQKLISEEDLAANDILDYKDDDDKV
Tag:	C-Myc/DDK
Purity:	> 80% as determined by SDS-PAGE and Coomassie blue staining
Concentration:	>0.05 µg/µL as determined by microplate BCA method
Labeling Method:	Labeled with [U- 13C6, 15N4]-L-Arginine and [U- 13C6, 15N2]-L-Lysine
Buffer:	25 mM Tris-HCl, 100 mM glycine, pH 7.3
Storage:	Store at -80°C. Avoid repeated freeze-thaw cycles.
Stability:	Stable for 3 months from receipt of products under proper storage and handling conditions.
RefSeq:	NP_064514
RefSeq Size:	794
RefSeq ORF:	417
Synonyms:	CLC2; PPL13
Locus ID:	56891
UniProt ID:	Q8TCE9
Cytogenetics:	19q13.2



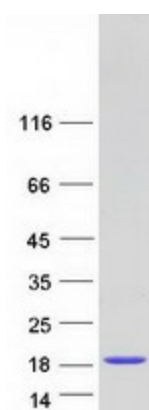
[View online »](#)

Summary:

This gene is predominantly expressed in placenta. The encoded protein belongs to the galectin (galaptin/S-lectin) family. The members of galectin family contain one or two carbohydrate recognition domains, which can bind beta-galactoside. Two alternatively spliced transcript variants encoding distinct isoforms have been observed. [provided by RefSeq, Jul 2008]

Protein Families:

Transmembrane

Product images:

Coomassie blue staining of purified LGALS14 protein (Cat# [TP304625]). The protein was produced from HEK293T cells transfected with LGALS14 cDNA clone (Cat# [RC204625]) using MegaTran 2.0 (Cat# [TT210002]).