

Product datasheet for PH304605

Cytochrome P450 2C8 (CYP2C8) (NM_000770) Human Mass Spec Standard

Product data:

Product Type:	Mass Spec Standards
Description:	CYP2C8 MS Standard C13 and N15-labeled recombinant protein (NP_000761)
Species:	Human
Expression Host:	HEK293
Expression cDNA Clone or AA Sequence:	RC204605
Predicted MW:	55.8 kDa
Protein Sequence:	>RC204605 protein sequence Red=Cloning site Green=Tags(s)

MEPFVVLVLCLSFMLLFSLWRQSCRRRLPPGPTPLPIIGNMLQIDVKDICKSFTNFSKVVYGPVFTVYFG
MNPVVVFHGYESVKEALIDNGEEFSGRGNPISQRITKGLGISSNGKRWKEIRRFSLTLRNFGMGKRS
IEDRVQEEAHCLVEELRKTASPCDPTFILGCAPCNVICSVVQKRFDYKDQNFLTLMKRFNENFRILNS
PWIQVCNNFPLLIDCFPGTHNKVLKNVALTRSYIREKVKEHQASLDVNNPRDFIDCFLIKMEQEKDNQKS
EFNIENLVGTVADLFVAGTETTSTTLRYGLLLLLKHPEVTAKVQEEIDHVIGRHRSPCMQDRSHMPYTD
VVHEIQRYSDLVPTGVPHAVTTDTKFRNYLIPKGTTIMALLTSVLHDDKEFPNPNI FDPGHFLDKNGNFK
KSDYFMPFSAGKRICAGEGLARMELFLFTTILQNFNLKSVDDLKLNLTAVTKGIVSLPPSYQICFIPV

TRTRPLEQKLI SEEDLAANDILDYKDDDDKV

Tag:	C-Myc/DDK
Purity:	> 80% as determined by SDS-PAGE and Coomassie blue staining
Concentration:	>0.05 µg/µL as determined by microplate BCA method
Labeling Method:	Labeled with [U- ¹³ C ₆ , ¹⁵ N ₄]-L-Arginine and [U- ¹³ C ₆ , ¹⁵ N ₂]-L-Lysine
Buffer:	25 mM Tris-HCl, 100 mM glycine, pH 7.3
Storage:	Store at -80°C. Avoid repeated freeze-thaw cycles.
Stability:	Stable for 3 months from receipt of products under proper storage and handling conditions.
RefSeq:	<u>NP_000761</u>
RefSeq Size:	1924
RefSeq ORF:	1470
Synonyms:	CPC8; CYP2C8DM; CYPIIC8; MP-12/MP-20



[View online »](#)

Locus ID: 1558

UniProt ID: [P10632](#)

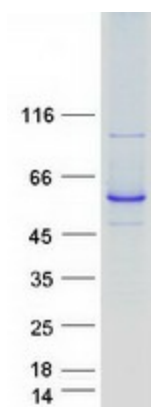
Cytogenetics: 10q23.33

Summary: This gene encodes a member of the cytochrome P450 superfamily of enzymes. The cytochrome P450 proteins are monooxygenases which catalyze many reactions involved in drug metabolism and synthesis of cholesterol, steroids and other lipids. This protein localizes to the endoplasmic reticulum and its expression is induced by phenobarbital. The enzyme is known to metabolize many xenobiotics, including the anticonvulsive drug mephenytoin, benzo(a)pyrene, 7-ethoxycoumarin, and the anti-cancer drug taxol. This gene is located within a cluster of cytochrome P450 genes on chromosome 10q24. Several transcript variants encoding a few different isoforms have been found for this gene. [provided by RefSeq, Nov 2010]

Protein Families: Druggable Genome, P450, Transmembrane

Protein Pathways: Arachidonic acid metabolism, Drug metabolism - cytochrome P450, Linoleic acid metabolism, Metabolic pathways, Metabolism of xenobiotics by cytochrome P450, Retinol metabolism

Product images:



Coomassie blue staining of purified CYP2C8 protein (Cat# [TP304605]). The protein was produced from HEK293T cells transfected with CYP2C8 cDNA clone (Cat# [RC204605]) using MegaTran 2.0 (Cat# [TT210002]).