

Product datasheet for PH304595

RPS5 (NM_001009) Human Mass Spec Standard

Product data:

Product Type:	Mass Spec Standards
Description:	RPS5 MS Standard C13 and N15-labeled recombinant protein (NP_001000)
Species:	Human
Expression Host:	HEK293
Expression cDNA Clone or AA Sequence:	RC204595
Predicted MW:	22.7 kDa
Protein Sequence:	>RC204595 representing NM_001009 Red=Cloning site Green=Tags(s) MTEWETAAPAVAETPDIKLFGKWSTDDVQINDISLQDYIAVKEKYAKYLPHSAGRYAAKFRKAQCPIVE RLTNSMMMHRNNGKCLMTVRIVKHAFEIHLLTGENPLQVLVNAIINSGPREDSTRIGRAGTVRRQAVD VSPLRRVNQAIWLLCTGAREAAFRNIKTIAECLADELINAAGSSNSYAIKKKDELERVAKSNR TRTRPLEQKLI SEEDLAANDILDYKDDDDKV
Tag:	C-Myc/DDK
Purity:	> 80% as determined by SDS-PAGE and Coomassie blue staining
Concentration:	>0.05 µg/µL as determined by microplate BCA method
Labeling Method:	Labeled with [U- 13C6, 15N4]-L-Arginine and [U- 13C6, 15N2]-L-Lysine
Buffer:	25 mM Tris-HCl, 100 mM glycine, pH 7.3
Storage:	Store at -80°C. Avoid repeated freeze-thaw cycles.
Stability:	Stable for 3 months from receipt of products under proper storage and handling conditions.
RefSeq:	<u>NP_001000</u>
RefSeq Size:	755
RefSeq ORF:	612
Synonyms:	S5
Locus ID:	6193
UniProt ID:	<u>P46782</u> , <u>A0A024R4Q8</u>



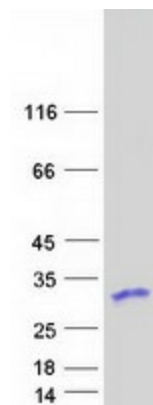
[View online »](#)

Cytogenetics: 19q13.43

Summary: Ribosomes, the organelles that catalyze protein synthesis, consist of a small 40S subunit and a large 60S subunit. Together these subunits are composed of 4 RNA species and approximately 80 structurally distinct proteins. This gene encodes a ribosomal protein that is a component of the 40S subunit. The protein belongs to the S7P family of ribosomal proteins. It is located in the cytoplasm. Variable expression of this gene in colorectal cancers compared to adjacent normal tissues has been observed, although no correlation between the level of expression and the severity of the disease has been found. As is typical for genes encoding ribosomal proteins, there are multiple processed pseudogenes of this gene dispersed through the genome. [provided by RefSeq, Jul 2008]

Protein Pathways: Ribosome

Product images:



Coomassie blue staining of purified RPS5 protein (Cat# [TP304595]). The protein was produced from HEK293T cells transfected with RPS5 cDNA clone (Cat# [RC204595]) using MegaTran 2.0 (Cat# [TT210002]).