

Product datasheet for PH304594

GTDC1 (NM_024659) Human Mass Spec Standard

Product data:

Product Type:	Mass Spec Standards
Description:	GTDC1 MS Standard C13 and N15-labeled recombinant protein (NP_078935)
Species:	Human
Expression Host:	HEK293
Expression cDNA Clone or AA Sequence:	RC204594
Predicted MW:	43 kDa
Protein Sequence:	>RC204594 protein sequence Red=Cloning site Green=Tags(s)
	MSILIIIEAFYGGSHKQLVDLLQEELGDCVVYTLPAKKWHWRARTSALYFSQTIPISEHYRTLFASSVLNL TELAALRPDLGKLLKILYFHENQLIYPVKKCQERDFQYGYNQILSCLVADVVFNSVFNMESFLTSMGKF MKLIPDHRPKDLESIIIRPKQVIYFPIRFPDVSRLFMPKHKTTHLKKMLGLKNGGAVLSMALPFQPEQRD SEDLLKNFNSECDTHCGLDARQEYLGNSLRQESDLKKSTSSDNSSSHHGENKQNLTVDPDILGGVDNQ QRLLHIVWPHRWLEAVYCGCYPLCPKDLVYPEIFPAEYLSTPEQLSKRLQNFCKRPDIIRKHLKGEIA PFSWAALHGKFRSLLTTEPREDL
	TRTRPLEQKLISEEDLAANDILDYKDDDDKV
Tag:	C-Myc/DDK
Purity:	> 80% as determined by SDS-PAGE and Coomassie blue staining
Concentration:	>0.05 µg/µL as determined by microplate BCA method
Labeling Method:	Labeled with [U- ¹³ C ₆ , ¹⁵ N ₄]-L-Arginine and [U- ¹³ C ₆ , ¹⁵ N ₂]-L-Lysine
Buffer:	25 mM Tris-HCl, 100 mM glycine, pH 7.3
Storage:	Store at -80°C. Avoid repeated freeze-thaw cycles.
Stability:	Stable for 3 months from receipt of products under proper storage and handling conditions.
RefSeq:	NP_078935
RefSeq Size:	2419
RefSeq ORF:	1119
Synonyms:	Hmat-Xa; mat-Xa
Locus ID:	79712

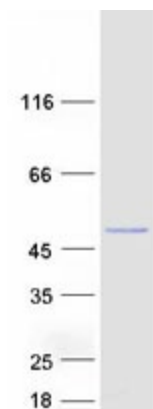


[View online »](#)

UniProt ID: [Q4AE62](#)

Cytogenetics: 2q22.3

Product images:



Coomassie blue staining of purified GTDC1 protein (Cat# [TP304594]). The protein was produced from HEK293T cells transfected with GTDC1 cDNA clone (Cat# [RC204594]) using MegaTran 2.0 (Cat# [TT210002]).