

Product datasheet for PH304591

RRAS2 (NM_012250) Human Mass Spec Standard

Product data:

Product Type:	Mass Spec Standards
Description:	RRAS2 MS Standard C13 and N15-labeled recombinant protein (NP_036382)
Species:	Human
Expression Host:	HEK293
Expression cDNA Clone or AA Sequence:	RC204591
Predicted MW:	23.4 kDa
Protein Sequence:	>RC204591 protein sequence Red=Cloning site Green=Tags(s) MAAAGWRDGSQEKYRLVVVGGGGVGSALTIQFIQSYFVTDYDPTIEDSYTKQCVIDDRAARLDILDTA GQEEFGAMREQYMRGTGEGFLLVFSVTDGRSFEEIYKFQRQILRVKDRDEFPMILIGNKADLDHQRQVTQE EQQLARQLKVTYMEASAKIRMNVDQAFHELVRVIRKFQEQCPPSPEPTRKEKDKKGCHCVIF SGPTRRTRPLEQKLI SEEDLAANDILDYKDDDDKV
Tag:	C-Myc/DDK
Purity:	> 80% as determined by SDS-PAGE and Coomassie blue staining
Concentration:	>0.05 µg/µL as determined by microplate BCA method
Labeling Method:	Labeled with [U- 13C6, 15N4]-L-Arginine and [U- 13C6, 15N2]-L-Lysine
Buffer:	25 mM Tris-HCl, 100 mM glycine, pH 7.3
Storage:	Store at -80°C. Avoid repeated freeze-thaw cycles.
Stability:	Stable for 3 months from receipt of products under proper storage and handling conditions.
RefSeq:	NP_036382
RefSeq Size:	2360
RefSeq ORF:	612
Synonyms:	NS12; TC21
Locus ID:	22800
UniProt ID:	P62070



[View online »](#)

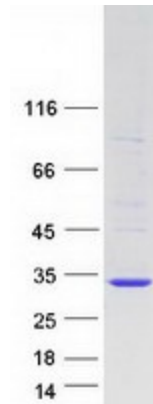
Cytogenetics: 11p15.2

Summary: This gene encodes a member of the R-Ras subfamily of Ras-like small GTPases. The encoded protein associates with the plasma membrane and may function as a signal transducer. This protein may play an important role in activating signal transduction pathways that control cell proliferation. Mutations in this gene are associated with the growth of certain tumors. Pseudogenes of this gene are found on chromosomes 1 and 2. Alternate splicing results in multiple transcript variants. [provided by RefSeq, Apr 2010]

Protein Families: Druggable Genome

Protein Pathways: MAPK signaling pathway, Regulation of actin cytoskeleton, Tight junction

Product images:



Coomassie blue staining of purified RRAS2 protein (Cat# [TP304591]). The protein was produced from HEK293T cells transfected with RRAS2 cDNA clone (Cat# [RC204591]) using MegaTran 2.0 (Cat# [TT210002]).