

Product datasheet for PH304576

Vinculin (VCL) (NM_003373) Human Mass Spec Standard

Product data:

Product Type:	Mass Spec Standards
Description:	VCL MS Standard C13 and N15-labeled recombinant protein (NP_003364)
Species:	Human
Expression Host:	HEK293
Expression cDNA Clone or AA Sequence:	RC204576
Predicted MW:	116.7 kDa
Protein Sequence:	>RC204576 protein sequence Red=Cloning site Green=Tags(s)

MPVFHTRTIESILEPVAQQISHLVIMHEEGEVDGKAIPDLTAPVAAVQAAVSNLVRVGKETVQTTEQIL
KRDMPFAFIKVENACTKLVAQAQMLQSDPYSVPARDYLIDGSRGILSGTSDLLLTFDEAEVRKIIRVCKG
ILEYLTVAEVVETMEDLVITYTKNLGPGMTKMAKMIDERQQELTHQEHRVMLVNSMNTVKELLPVLISAMK
IFVTTKNSKNQGIIEALKNRNFTLEKMSAEINEIIRVLQLTSWEDAWASKDTEAMKRALASIDSKLNQA
KGWLRDPSASPGDAGEQAIRQILDEAGVVGELCAGKERREILGTCKMLGQMTDQVADLRARGQSSPVM
QKAQQVSQGLDVLTAKVENAARKLEAMTNSKQSI AKKIDAAQNWLADPNGGPEGEEQIRGALAEARKIAE
LCDDPKERDDILRSLGEISALTSKLADLRRQGGDSPEARALAKQVATALQNLQTKNRAVANSRPAAKAA
VHLEGGIEQAQRWIDNPTVDDRGVGQAAIRGLVAEGHRLANVMMPYRQDLLAKCDRVDQLTAQLADLAA
RGEGESQARALASQLQDSLKDLKARMQEAMTQEVSDVFSDTTTPIKLLAVAATAPPDAPNREEVFDERA
ANFENHSKGLGATAEKAAAVGTANKSTVEGIQASVKTARELTPQVVSARILLRNPQNAAAYEHFETMKN
QWIDNVEKMTGLVDEAIDTKSLLDASEEAIKKDLKCKVAMANIQPQMLVAGATSIARRANRILLVAKRE
VENSEDPKFREEAVKAASDELSKTISPMVMDAKAVAGNISDPGLQKSFLDSGYRILGAVAKVREAFQPQEP
DFPPPPDLEQLRLTDELAPPKPLPEGEVPPRPPPEEKDEEFPEQKAGEVINQPMMAARQLHDEAR
KWSKGNDDIIAAAKRMALLMAEMSRLVRGGSGTKRALIQCAKDIKASDEVTRLAKEVAKQCTDKRIRTN
LLQVCERIPTISTQLKILSTVKATMLGRITNISDEESEQATEMLVHNAQNLMQSVKETVREAEAAASIKIRT
DAGFTLRWVRKTPWYQ

TRTRPLEQKLI SEEDLAANDILDYKDDDDKV

Tag:	C-Myc/DDK
Purity:	> 80% as determined by SDS-PAGE and Coomassie blue staining
Concentration:	>0.05 µg/µL as determined by microplate BCA method
Labeling Method:	Labeled with [U- ¹³ C ₆ , ¹⁵ N ₄]-L-Arginine and [U- ¹³ C ₆ , ¹⁵ N ₂]-L-Lysine
Buffer:	25 mM Tris-HCl, 100 mM glycine, pH 7.3



[View online »](#)

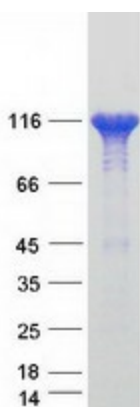
Storage:	Store at -80°C. Avoid repeated freeze-thaw cycles.
Stability:	Stable for 3 months from receipt of products under proper storage and handling conditions.
RefSeq:	NP_003364
RefSeq Size:	5443
RefSeq ORF:	3198
Synonyms:	CMD1W; CMH15; HEL114; MV; MVCL
Locus ID:	7414
UniProt ID:	P18206 , A0A024QZN4 , B3KXA2
Cytogenetics:	10q22.2

Summary: Vinculin is a cytoskeletal protein associated with cell-cell and cell-matrix junctions, where it is thought to function as one of several interacting proteins involved in anchoring F-actin to the membrane. Defects in VCL are the cause of cardiomyopathy dilated type 1W. Dilated cardiomyopathy is a disorder characterized by ventricular dilation and impaired systolic function, resulting in congestive heart failure and arrhythmia. Multiple alternatively spliced transcript variants have been found for this gene, but the biological validity of some variants has not been determined. [provided by RefSeq, Jul 2008]

Protein Families: Druggable Genome

Protein Pathways: Adherens junction, Focal adhesion, Leukocyte transendothelial migration, Regulation of actin cytoskeleton

Product images:



Coomassie blue staining of purified VCL protein (Cat# [TP304576]). The protein was produced from HEK293T cells transfected with VCL cDNA clone (Cat# [RC204576]) using MegaTran 2.0 (Cat# [TT210002]).