

Product datasheet for PH304560

C11orf68 (NM_031450) Human Mass Spec Standard

Product data:

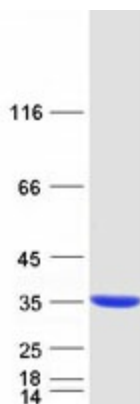
Product Type:	Mass Spec Standards
Description:	C11orf68 MS Standard C13 and N15-labeled recombinant protein (NP_113638)
Species:	Human
Expression Host:	HEK293
Expression cDNA Clone or AA Sequence:	RC204560
Predicted MW:	27.4 kDa
Protein Sequence:	>RC204560 protein sequence Red=Cloning site Green=Tags(s) MEPGEELEEEGSPGGREDGFTA EHLAAEAMAADMPWL VFDARTTPATELDAWLAKYPPSQVTRYGDPGS PNSEPVGWIAVYQGQYSPNSGDVQGLQA AWEALQTSGRPITPGTLRQLAITHHVLSGKWLMLAPGFKLD HAWAGIARAVVEGRLQVAKVSPRAKEGGRQVICVYTDDFDR LGVLEADSAIRAAGIKCLLTYKPDVYTY LGIYRANRWHLCPTLYESRFQLGGSARGSRVLDRANNVELT TRTRPLEQKLI SEEDLAANDILDYKDDDDKV
Tag:	C-Myc/DDK
Purity:	> 80% as determined by SDS-PAGE and Coomassie blue staining
Concentration:	>0.05 µg/µL as determined by microplate BCA method
Labeling Method:	Labeled with [U- 13C6, 15N4]-L-Arginine and [U- 13C6, 15N2]-L-Lysine
Buffer:	25 mM Tris-HCl, 100 mM glycine, pH 7.3
Storage:	Store at -80°C. Avoid repeated freeze-thaw cycles.
Stability:	Stable for 3 months from receipt of products under proper storage and handling conditions.
RefSeq:	NP_113638
RefSeq Size:	1568
RefSeq ORF:	753
Synonyms:	BLES03; P5326
Locus ID:	83638
UniProt ID:	Q9H3H3 , Q9H3H3-2



[View online »](#)

Cytogenetics: 11q13.1

Product images:



Coomassie blue staining of purified C11orf68 protein (Cat# [TP304560]). The protein was produced from HEK293T cells transfected with C11orf68 cDNA clone (Cat# [RC204560]) using MegaTran 2.0 (Cat# [TT210002]).