

Product datasheet for PH304559

MRPL32 (NM_031903) Human Mass Spec Standard

Product data:

Product Type:	Mass Spec Standards
Description:	MRPL32 MS Standard C13 and N15-labeled recombinant protein (NP_114109)
Species:	Human
Expression Host:	HEK293
Expression cDNA Clone or AA Sequence:	RC204559
Predicted MW:	21.4 kDa
Protein Sequence:	>RC204559 protein sequence Red=Cloning site Green=Tags(s) MALAMLVLVVSPWSAARGVLRNYWERLLRKL PQSRPGFSPWPALAVQGPAMFTEPANDTSGSKENSS LLDSIFWMAAPKNRRTIEVNR CRRRNPKLIKVKNNIDVCECGHLKQKHVLCAYCYEKVCKETA EIRRQ IGKQEGGPFKAPT IETVVLYTGETPSEQDQGKRI IERDRKRPSWFTQN TRTRPLEQKLI SEEDLAANDILDYKDDDDKV
Tag:	C-Myc/DDK
Purity:	> 80% as determined by SDS-PAGE and Coomassie blue staining
Concentration:	>0.05 µg/µL as determined by microplate BCA method
Labeling Method:	Labeled with [U- ¹³ C ₆ , ¹⁵ N ₄]-L-Arginine and [U- ¹³ C ₆ , ¹⁵ N ₂]-L-Lysine
Buffer:	25 mM Tris-HCl, 100 mM glycine, pH 7.3
Storage:	Store at -80°C. Avoid repeated freeze-thaw cycles.
Stability:	Stable for 3 months from receipt of products under proper storage and handling conditions.
RefSeq:	NP_114109
RefSeq Size:	908
RefSeq ORF:	564
Synonyms:	bMRP-59b; HSPC283; L32mt; MRP-L32
Locus ID:	64983
UniProt ID:	Q9BYC8 , A4D1V4

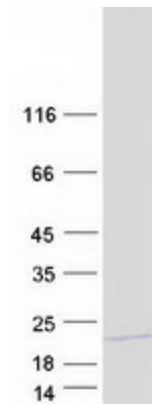


[View online »](#)

Cytogenetics: 7p14.1

Summary: Mammalian mitochondrial ribosomal proteins are encoded by nuclear genes and help in protein synthesis within the mitochondrion. Mitochondrial ribosomes (mitoribosomes) consist of a small 28S subunit and a large 39S subunit. They have an estimated 75% protein to rRNA composition compared to prokaryotic ribosomes, where this ratio is reversed. Another difference between mammalian mitoribosomes and prokaryotic ribosomes is that the latter contain a 5S rRNA. Among different species, the proteins comprising the mitoribosome differ greatly in sequence, and sometimes in biochemical properties, which prevents easy recognition by sequence homology. This gene encodes a 39S subunit protein that belongs to the L32 ribosomal protein family. A pseudogene corresponding to this gene is found on chromosome Xp. [provided by RefSeq, Jul 2008]

Product images:



Coomassie blue staining of purified MRPL32 protein (Cat# [TP304559]). The protein was produced from HEK293T cells transfected with MRPL32 cDNA clone (Cat# [RC204559]) using MegaTran 2.0 (Cat# [TT210002]).