

Product datasheet for PH304538

FGF21 (NM_019113) Human Mass Spec Standard

Product data:

Product Type:	Mass Spec Standards
Description:	FGF21 MS Standard C13 and N15-labeled recombinant protein (NP_061986)
Species:	Human
Expression Host:	HEK293
Expression cDNA Clone or AA Sequence:	RC204538
Predicted MW:	19.4 kDa
Protein Sequence:	<p>>RC204538 representing NM_019113</p> <p>Red=Cloning site Green=Tags(s)</p> <p>MDSDETGFHSLWVSVLAGLLGACQAHPIPDSSPLLQFGGQVRQRYLYTDDAQQTEAHLEIREDGTVG GAADQSPESLLQLKALKPGVIQILGVKTSRFLCQRPDGALYGSLHFDPEACSFRELLLEDGYNVYQSEAH GLPLHLPGNKSPHRDPAPRGPAPFLPLPGLPPAPPEPPGILAPQPPDVGSSDPLSMVGPSQGRSPSYAS</p> <p>TRTRPLEQKLISEEDLAANDILDYKDDDDKV</p>
Tag:	C-Myc/DDK
Purity:	> 80% as determined by SDS-PAGE and Coomassie blue staining
Concentration:	>0.05 µg/µL as determined by microplate BCA method
Labeling Method:	Labeled with [U- ¹³ C ₆ , ¹⁵ N ₄]-L-Arginine and [U- ¹³ C ₆ , ¹⁵ N ₂]-L-Lysine
Buffer:	25 mM Tris-HCl, 100 mM glycine, pH 7.3
Storage:	Store at -80°C. Avoid repeated freeze-thaw cycles.
Stability:	Stable for 3 months from receipt of products under proper storage and handling conditions.
RefSeq:	<u>NP_061986</u>
RefSeq Size:	940
RefSeq ORF:	627
Locus ID:	26291
UniProt ID:	<u>Q9NSA1</u>
Cytogenetics:	19q13.33


[View online »](#)

Summary:

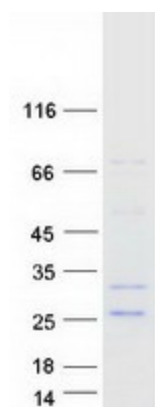
This gene encodes a member of the fibroblast growth factor (FGF) family. FGF family members possess broad mitogenic and cell survival activities and are involved in a variety of biological processes. This protein is a secreted endocrine factor that functions as a major metabolic regulator. The encoded protein stimulates the uptake of glucose in adipose tissue. [provided by RefSeq, Mar 2016]

Protein Families:

Adult stem cells, Embryonic stem cells, ES Cell Differentiation/IPS, Secreted Protein

Protein Pathways:

MAPK signaling pathway, Melanoma, Pathways in cancer, Regulation of actin cytoskeleton

Product images:


Coomassie blue staining of purified FGF21 protein (Cat# [TP304538]). The protein was produced from HEK293T cells transfected with FGF21 cDNA clone (Cat# [RC204538]) using MegaTran 2.0 (Cat# [TT210002]).