

Product datasheet for PH304536

SEH1L (NM_031216) Human Mass Spec Standard

Product data:

Product Type:	Mass Spec Standards
Description:	SEH1L MS Standard C13 and N15-labeled recombinant protein (NP_112493)
Species:	Human
Expression Host:	HEK293
Expression cDNA Clone or AA Sequence:	RC204536
Predicted MW:	39.6 kDa
Protein Sequence:	>RC204536 protein sequence Red =Cloning site Green =Tags(s)

MFVARSIADHKDLIHDVSFDFHGRMATCSSDQSVKVDKSESGDWHCTASWKTHSGSVVRVTWAHPEF
 GQVLASCSFDRTAAVWEEIVGESNDKLRGQSHWVKRTTLVDSRTSVTDVKFAPKHMGLMLATCSADGIVR
 IYEAPDVMNLSQWSLQHEISCKLSCSCISWNPSSSRAHSPMIAVGSDSSPNAMAKVQIFEYNENTRKYA
 KAETLMTVTDPVHDIAFAPNLGRSFHILAIAATKDVRIFTLKPVKRELTSGGPTKFEIHIVAQFDNHNSQ
 VWRVSWNITGTVLASSGDDGCVRLWKANYMDNWKCTGILKNGSPVNGSSQQGTSNPSLGSSTIPSLQNSL
 NGSSAGRKHS

TRTRPLEQKLISEEDLAANDILDYKDDDDKV

Tag:	C-Myc/DDK
Purity:	> 80% as determined by SDS-PAGE and Coomassie blue staining
Concentration:	>0.05 µg/µL as determined by microplate BCA method
Labeling Method:	Labeled with [U- ¹³ C ₆ , ¹⁵ N ₄]-L-Arginine and [U- ¹³ C ₆ , ¹⁵ N ₂]-L-Lysine
Buffer:	25 mM Tris-HCl, 100 mM glycine, pH 7.3
Storage:	Store at -80°C. Avoid repeated freeze-thaw cycles.
Stability:	Stable for 3 months from receipt of products under proper storage and handling conditions.
RefSeq:	<u>NP_112493</u>
RefSeq Size:	3513
RefSeq ORF:	1080
Synonyms:	SEC13L; Seh1; SEH1A; SEH1B
Locus ID:	81929

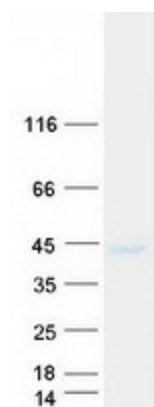

[View online »](#)

UniProt ID: [Q96EE3](#)

Cytogenetics: 18p11.21

Summary: The protein encoded by this gene is part of a nuclear pore complex, Nup107-160. This protein contains WD repeats and shares 34% amino acid identity with yeast Seh1 and 30% identity with yeast Sec13. All constituents of the Nup107-160 complex, including this protein, specifically localize to kinetochores in mitosis. Two alternatively spliced transcript variants encoding distinct isoforms have been found for this gene. [provided by RefSeq, Jul 2008]

Product images:



Coomassie blue staining of purified SEH1L protein (Cat# [TP304536]). The protein was produced from HEK293T cells transfected with SEH1L cDNA clone (Cat# [RC204536]) using MegaTran 2.0 (Cat# [TT210002]).