

Product datasheet for PH304531

CENPH (NM_022909) Human Mass Spec Standard

Product data:

Product Type:	Mass Spec Standards
Description:	CENPH MS Standard C13 and N15-labeled recombinant protein (NP_075060)
Species:	Human
Expression Host:	HEK293
Expression cDNA Clone or AA Sequence:	RC204531
Predicted MW:	28.5 kDa
Protein Sequence:	>RC204531 protein sequence Red=Cloning site Green=Tags(s) MEEQPQMQDADEPADSGGEGRAGPPQVAGAQAACSEDRMTLLRLRAQTKQQLLEYKSMVDASEEKTPE QIMQEKQIEAKIEDLENEIEEVKVAFEIKKLALDRMLSTALKKNLEKISRQSSVLMDNMKHLELNKLI MKSQQESWDLEEKLLDIRKKRLQLKQASESKLLEIQTEKNKQKIDLDSMENSERIKIIRQNLQMEIKITT VIQHVFNLIILGSKVNWAEDPALKEIVLQLEKNVDMM TRTRPLEQKLI SEEDLAANDILDYKDDDDKV
Tag:	C-Myc/DDK
Purity:	> 80% as determined by SDS-PAGE and Coomassie blue staining
Concentration:	>0.05 µg/µL as determined by microplate BCA method
Labeling Method:	Labeled with [U- ¹³ C ₆ , ¹⁵ N ₄]-L-Arginine and [U- ¹³ C ₆ , ¹⁵ N ₂]-L-Lysine
Buffer:	25 mM Tris-HCl, 100 mM glycine, pH 7.3
Storage:	Store at -80°C. Avoid repeated freeze-thaw cycles.
Stability:	Stable for 3 months from receipt of products under proper storage and handling conditions.
RefSeq:	NP_075060
RefSeq Size:	1405
RefSeq ORF:	741
Locus ID:	64946
UniProt ID:	Q9H3R5 , A0A0S2Z5T0
Cytogenetics:	5q13.2



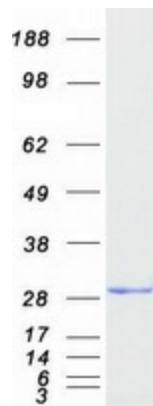
[View online »](#)

Summary:

Centromere and kinetochore proteins play a critical role in centromere structure, kinetochore formation, and sister chromatid separation. The protein encoded by this gene colocalizes with inner kinetochore plate proteins CENP-A and CENP-C in both interphase and metaphase. It localizes outside of centromeric heterochromatin, where CENP-B is localized, and inside the kinetochore corona, where CENP-E is localized during prometaphase. It is thought that this protein can bind to itself, as well as to CENP-A, CENP-B or CENP-C. Multimers of the protein localize constitutively to the inner kinetochore plate and play an important role in the organization and function of the active centromere-kinetochore complex. [provided by RefSeq, Jul 2008]

Protein Families:

Druggable Genome

Product images:

Coomassie blue staining of purified CENPH protein (Cat# [TP304531]). The protein was produced from HEK293T cells transfected with CENPH cDNA clone (Cat# [RC204531]) using MegaTran 2.0 (Cat# [TT210002]).